



## Biogeography in the deep: Hierarchical population genomic structure of two beaked whale species

Aubrie B. Onoufriou<sup>a,b</sup>, Oscar E. Gaggiotti<sup>c</sup>, Natacha Aguilar de Soto<sup>b</sup>, Morgan L. McCarthy<sup>d</sup>, Phillip A. Morin<sup>e</sup>, Massimiliano Rosso<sup>f</sup>, Merel Dalebout<sup>g</sup>, Nicholas Davison<sup>h</sup>, Robin W. Baird<sup>i</sup>, C. Scott Baker<sup>j</sup>, Simon Berrow<sup>k,l</sup>, Andrew Brownlow<sup>h</sup>, Daniel Burns<sup>m,n</sup>, Florence Caurant<sup>o</sup>, Diane Claridge<sup>p</sup>, Rochelle Constantine<sup>q</sup>, Fabien Demaret<sup>o</sup>, Sascha Dreyer<sup>d</sup>, Martina Đuras<sup>r</sup>, John W. Durban<sup>p,s</sup>, Alexandros Frantzis<sup>t</sup>, Luis Freitas<sup>u</sup>, Gabrielle Genty<sup>v</sup>, Ana Galov<sup>w</sup>, Sabine S. Hansen<sup>d</sup>, Andrew C. Kitchener<sup>x,y</sup>, Vidal Martin<sup>z</sup>, Antonio A. Mignucci-Giannoni<sup>aa,ab</sup>, Valeria Montano<sup>a</sup>, Aurelie Moulins<sup>f</sup>, Carlos Olavarría<sup>ac</sup>, M. Michael Poole<sup>ad</sup>, Cristel Reyes Suárez<sup>b</sup>, Emer Rogan<sup>ae</sup>, Conor Ryan<sup>k,af</sup>, Agustina Schiavi<sup>b</sup>, Paola Tepsich<sup>f</sup>, Jorge Urban R.<sup>ag</sup>, Kristi West<sup>ah</sup>, Morten Tange Olsen<sup>d</sup>, Emma L. Carroll<sup>a,q,v,\*</sup>

<sup>a</sup> School of Biology, University of St Andrews, St Andrews, UK

<sup>b</sup> BIOECOMAC Department of Animal Biology, Edaphology and Geology, University of La Laguna, San Cristóbal de La Laguna, Tenerife, Canary Islands, Spain

<sup>c</sup> Centre for Biological Diversity, School of Biology, University of St Andrews, St Andrews, UK

<sup>d</sup> Section for Molecular Ecology and Evolution, Globe Institute, University of Copenhagen, Copenhagen, Denmark

<sup>e</sup> Southwest Fisheries Science Center, National Marine Fisheries Service, National Oceanic and Atmospheric Administration, La Jolla, CA, USA

<sup>f</sup> CIMA Research Foundation, Savona, Italy

<sup>g</sup> School of Biological, Earth, and Environmental Sciences, University of New South Wales, Sydney, New South Wales, Australia

<sup>h</sup> Scottish Marine Animal Stranding Scheme, School of Biodiversity, One Health and Veterinary Medicine, College of Medical, Veterinary and Life Sciences, University of Glasgow, Glasgow, UK

<sup>i</sup> Cascadia Research Collective, Olympia, WA, USA

<sup>j</sup> Marine Mammal Institute, Hatfield Marine Science Center, Oregon State University, Newport, OR, USA

<sup>k</sup> Marine and Freshwater Research Centre, Atlantic Technological University, Dublin Road, Galway, Ireland

<sup>l</sup> Irish Whale and Dolphin Group, Merchant's Quay, Kiltush, County Clare, Ireland

<sup>m</sup> Southern Cross University, Marine Ecology Research Centre, Lismore, Australia

<sup>n</sup> South Pacific Whale Research Consortium, Avarua, Cook Islands

<sup>o</sup> Observatoire Pelagis, UMS3462 La Rochelle University-CNRS, La Rochelle, France

<sup>p</sup> Bahamas Marine Mammal Research Organisation, Abaco, Bahamas

<sup>q</sup> School of Biological Sciences Te Kura Mātauranga Kōiora, University of Auckland Waipapa Taumata Rau, Auckland 1010, Aotearoa New Zealand

<sup>r</sup> Department of Anatomy, Histology and Embryology, Faculty of Veterinary Medicine, University of Zagreb, Zagreb, Croatia

<sup>s</sup> Southall Environmental Associates, Inc., Aptos, CA 95003, USA

<sup>t</sup> Pelagos Cetacean Research Institute, Vouliagmeni, Greece

<sup>u</sup> Museu da Baleia da Madeira, Caniçal, Madeira, Portugal

<sup>v</sup> Sea Mammal Research Unit, Scottish Oceans Institute, University of St Andrews, St Andrews, UK

<sup>w</sup> Department of Biology, Faculty of Science, University of Zagreb, Zagreb, Croatia

<sup>x</sup> Department of Natural Sciences, National Museums Scotland, Edinburgh, UK

<sup>y</sup> School of Geosciences, University of Edinburgh Drummond Street, Edinburgh, UK

<sup>z</sup> Society for the Study of the Cetaceans in the Canary Archipelago (SECAC), Lanzarote, Canary Islands, Spain

\* Correspondence to: The University of Auckland Waipapa Taumata Rau, Auckland, Aotearoa New Zealand.  
E-mail address: [e.carroll@auckland.ac.nz](mailto:e.carroll@auckland.ac.nz) (E.L. Carroll).

<https://doi.org/10.1016/j.gecco.2022.e02308>

Received 9 May 2022; Received in revised form 10 October 2022; Accepted 13 October 2022

Available online 14 October 2022

2351-9894/© 2022 The Authors. Published by Elsevier B.V. This is an open access article under the CC BY license (<http://creativecommons.org/licenses/by/4.0/>).

<sup>aa</sup> Centro de Conservación de Manatíes del Caribe, Universidad Interamericana, Bayamón, Puerto Rico

<sup>ab</sup> Center for Conservation Medicine and Ecosystem Health, Ross University School of Veterinary Medicine, Basseterre, West Indies, Saint Kitts and Nevis

<sup>ac</sup> Centro de Estudios Avanzados en Zonas Áridas (CEAZA), La Serena, Chile

<sup>ad</sup> Marine Mammal Research Program, Maharepa, Moorea, French Polynesia

<sup>ae</sup> School of Biological, Earth & Environmental Sciences, University College Cork, Cork, Ireland

<sup>af</sup> Song of the Whale Research Team, Marine Conservation Research International, Kelvedon, Essex, UK

<sup>ag</sup> Departamento de Ciencias Marinas y Costeras, Universidad Autónoma de Baja California Sur, La Paz, B.C.S., México

<sup>ah</sup> Hawai'i Institute of Marine Biology, University of Hawai'i at Manoa, Kaneohe, HI, USA

## ARTICLE INFO

### Keywords:

DdRAD sequencing

Mitogenome sequencing

Phylogenomics

*Ziphius cavirostris*

*Mesoplodon densirostris*

Ziphiidae

## ABSTRACT

The deep sea is the largest ecosystem on Earth, yet little is known about the processes driving patterns of genetic diversity in its inhabitants. Here, we investigated the macro- and microevolutionary processes shaping genomic population structure and diversity in two poorly understood, globally distributed, deep-sea predators: Cuvier's beaked whale (*Ziphius cavirostris*) and Blainville's beaked whale (*Mesoplodon densirostris*). We used double-digest restriction associated DNA (ddRAD) and whole mitochondrial genome (mitogenome) sequencing to characterise genetic patterns using phylogenetic trees, cluster analysis, isolation-by-distance, genetic diversity and differentiation statistics. Single nucleotide polymorphisms (SNPs; Blainville's  $n = 43$  samples, SNPs=13988; Cuvier's  $n = 123$ , SNPs= 30479) and mitogenomes (Blainville's  $n = 27$ ; Cuvier's  $n = 35$ ) revealed substantial hierarchical structure at a global scale. Both species display significant genetic structure between the Atlantic, Indo-Pacific and in Cuvier's, the Mediterranean Sea. Within major ocean basins, clear differentiation is found between genetic clusters on the east and west sides of the North Atlantic, and some distinct patterns of structure in the Indo-Pacific and Southern Hemisphere. We infer that macroevolutionary processes shaping patterns of genetic diversity include biogeographical barriers, highlighting the importance of such barriers even to highly mobile, deep-diving taxa. The barriers likely differ between the species due to their thermal tolerances and evolutionary histories. On a microevolutionary scale, it seems likely that the balance between resident populations displaying site fidelity, and transient individuals facilitating gene flow, shapes patterns of connectivity and genetic drift in beaked whales. Based on these results, we propose management units to facilitate improved conservation measures for these elusive species.

## 1. Introduction

The deep sea is the largest habitat on Earth (Sutton and Milligan, 2019), yet less is understood about the species that live there, their distributions, population structure and connectivity than any other ecosystem. In the deep sea, underwater features, such as steep continental slopes, canyons, and oceanic islands, can create areas of upwelling, aggregating prey species on which predators forage (Worm et al., 2003). Biodiversity hotspots are often contained within well-defined biogeographical provinces (Costello et al., 2017), where barriers may be fully impassable (e.g., Isthmus of Panama), or permeable (e.g., shallow rises; Bianchi and Morri, 2000), providing the basis for hierarchical levels of population structure in the deep sea.

Beaked whales (Ziphiidae) comprise the most speciose group of deep sea marine mammals, yet their often elusive, offshore and deep-diving lifestyle means that most information on these taxa comes from occasional finds of dead, beach-stranded specimens and several species are listed as data deficient on the IUCN Red List. Blainville's and Cuvier's beaked whales (*Mesoplodon densirostris* (Blainville, 1817), and *Ziphius cavirostris* (G. Cuvier, 1823), respectively; 'Blainville's' and 'Cuvier's' hereafter) are among the most well-studied beaked whale species, based on the number of publications. Both have cosmopolitan distributions and occupy the deep seas of all major ocean basins, although only Cuvier's is regularly found in the Mediterranean and at higher latitudes (MacLeod et al., 2006). Both species show site fidelity to some nearshore areas with steep bathymetry (Baird, 2019), potentially leading to population genetic structuring, especially in the presence of biogeographical barriers.

While many natural populations are at risk of genetic erosion due to declining abundance from human impacts (Leroy et al., 2017), some marine mammals (and particularly cetaceans) may be amongst the most susceptible taxa (Cammen et al., 2016; Schipper et al., 2008). Beaked whales are known to strand in unusual mortality events (UMEs) driven by underwater noise from human activities (Bernaldo de Quirós et al., 2019; Cox et al., 2006; Simonis et al., 2020). The majority of UMEs involving beaked whales have been reported for Cuvier's and/or members of the *Mesoplodon* genus (D'Amico et al., 2009). However, the extent to which these mortalities might cause long-term, population-level impacts on these poorly understood species is currently unknown. Identifying the baseline patterns of population genetic diversity and structure of beaked whales, and understanding the underlying environmental drivers, would enable mortality to be linked with population units, thus facilitating future management efforts in the face of anthropogenic impacts.

To date, only mitochondrial DNA (mtDNA) has been analysed to investigate population structure and genetic diversity in Cuvier's and Blainville's (Dalebout et al., 2005; Morin et al., 2012). Cuvier's mtDNA control region and whole mitochondrial genome

(mitogenome) data revealed significant differences in haplotype frequencies between ocean basins, but not reciprocal monophyly, suggesting limited gene flow or incomplete lineage sorting (Dalebout et al., 2005; Morin et al., 2012). In contrast, Blainville's mitogenomes formed two reciprocally monophyletic clades according to Atlantic and Pacific ocean basins, indicative of no recent (maternal) gene flow (Morin et al., 2012). Although these studies suggest ocean-basin-level genetic structure, the paucity of beaked whale data makes it difficult to confirm these hypotheses and extend analyses to a finer geographical scale. Indeed, other deep-sea cetaceans can exist in populations that are socially-driven (e.g., sperm whales, *Physeter macrocephalus*; Alexander et al., 2016), island-associated (e.g., rough-toothed dolphins, *Steno bredanensis*; Jefferson, 2018) or panmictic (e.g., Gray's beaked whale, *Mesoplodon grayi*; Westbury et al., 2021).

Here, we aim to shed light on the population genetic structure, phylogeography and diversity of Cuvier's and Blainville's beaked whale species across their cosmopolitan ranges to inform conservation efforts and understand the micro- and macroevolutionary processes driving genetic structure in deep-sea species. We improve the spatial resolution of previous genetic studies by Dalebout et al. (2005) and Morin et al. (2012) by identifying finer-scale structure using larger sample sizes, and analysing whole mitogenomes and reduced-representation nuclear genomic data (ddRAD; double digest restriction-site associated DNA). We propose macro- and microevolutionary drivers for the substantial hierarchical genetic structure identified, which also allows us to recommend evolutionarily significant units (ESUs; Waples, 1995) and demographically independent populations (DIPs; Martien et al., 2019; Palsbøll, Bérubé, and Allendorf, 2007) for conservation and management.

## 2. Methods

### 2.1. Sample collection and lab protocols

Tissue samples were selected from the newly established International Tissue Archive of Beaked Whales (ITABW) to cover the full geographical ranges of Cuvier's and Blainville's (Electronic Supplementary Material (ESM) 1, Supplementary Spreadsheet Table (SST) 1). All sampling was done under appropriate local permits and, if applicable, local animal ethics approvals. DNA was extracted from tissue samples (ESM1) and sequencing libraries were prepared following the method described by Peterson et al. (2012) and optimised for beaked whales (Carroll et al., 2016, 2021) (ESM2). To explore major phylogeographical patterns, and supplement the nuclear analyses, we used "shotgun" sequencing (Carøe et al., 2018; ESM2 for protocol) to generate and analyse complete mitogenomes from a subset of the samples used for ddRAD, as well as additional low-quality museum samples, and augmented with publicly available sequences (Morin et al., 2012; SST1).

#### 2.1.1. Bioinformatics

DdRAD SNP discovery and filtering followed the pipeline of Carroll et al. (2021) with the full protocol available at [https://github.com/aono87/bw\\_reference\\_mapped](https://github.com/aono87/bw_reference_mapped). In summary, sequence quality was inspected using FASTQC v.0.11.8a (Andrews et al., 2010) and "process\_radtags" in STACKS, v. 2.0Beta9 (STACKS2; Rochette, Rivera-Colón, and Catchen, 2019) was used to demultiplex, quality check and trim reads. Sequences were aligned to a nuclear reference genome using BWA-MEM v. 0.7.15 (Li, 2013), converted and sorted using SAMTOOLS v. 1.6 (Li et al., 2009), and assigned read groups using PICARD TOOLKIT v. 2.14.1 (Broad Institute, 2019). Cuvier's sequences were aligned to the Cuvier's reference genome (GenBank accession: GCA\_004364475.1), and Blainville's sequences were aligned to the Sowerby's beaked whale reference genome (*Mesoplodon bidens*, GenBank accession: GCA\_004027085.1), the closest relative available at the time of analysis. DdRAD parameter optimisation, SNP genotyping methods and data quality control are described in detail in ESM3 and ESM4, following previously described methods (Carroll et al., 2016, 2021; O'Leary et al., 2018).

Mitochondrial sequencing reads were inspected with FASTQC. Adapters and sequences were trimmed (ktrim=r, k=23, mink=8, hdist=1, qtrim=r1, trimq=15, maq=20, and minlen=40) using 'bbduk.sh' (<https://jgi.doe.gov/data-and-tools/software-tools/bbtools/>). Reads were mapped to a reference mitogenome for each species (Cuvier's GenBank accession: NC\_021435.1; Blainville's: NC\_021974.2) using BWA-MEM and PCR duplicates were removed with SAMTOOLS v.1.9. The consensus mitogenome was extracted using ANGSD v.0.931 (Korneliussen et al., 2014) with the filters -doFasta 2 -doCounts 1 -minQ 30 -minMapQ 30 -setMinDepth 3. Depth of coverage was assessed using SAMTOOLS.

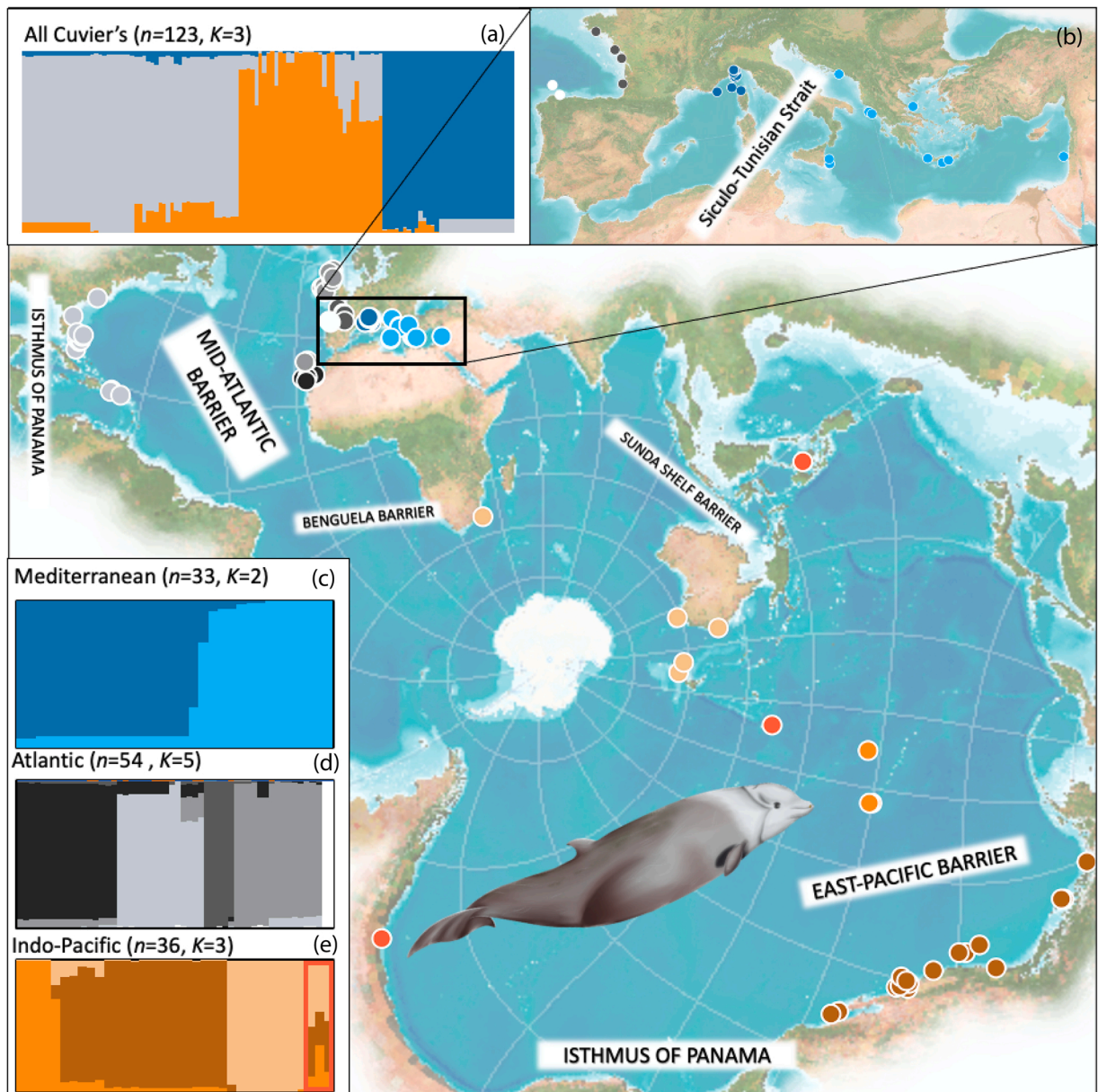
#### 2.1.2. Phylogeography

Global structure based on ddRAD SNPs was visualized by generating rooted neighbour-joining trees (BIONJ, Gascuel, 1997) for each species, using sequences from southern right whales (SRW, *Eubalaena australis*) as the outgroup (ESM5). Full mitogenomic sequences were analysed in a Bayesian phylogenetic framework implemented in BEAST v.2.5.2 (Bouckaert et al., 2019). For the mitogenome data, the 12srRNA, 16srRNA and 13 protein-coding genes were individually aligned, and the stop codons for the coding genes were removed in GENEIOUS PRIME v2020.1.2 (<https://www.geneious.com/>). The final alignments from the two rRNA and 13 protein-coding genes were subsequently concatenated into a single alignment, and substitution models were inferred for each codon position for each gene with PARTITIONFINDER v.2.1.1 (Lanfear et al., 2017). Control region (CR) data were analysed separately (see below). The resultant partitions were incorporated into BEAUTI, the graphical user interface for generating BEAST XML files (SST2).

For the Cuvier's mitogenome phylogeny, a strict clock with a Yule tree model was applied, as closely related species are not expected to have deviating clocks. Calibration dates followed most recent common ancestor (MRCA) estimates inferred from McGowen et al. (2019). Baird's beaked whale (*Berardius bairdii*; GenBank accession: NC\_005274.1) was used as an outgroup and the MRCA between all Cuvier's and the Baird's beaked whale outgroup was set to a mean age of 15 million years ago (mya; 95% probability range 12.3–17.6). The model was set to a 15,000,000 chain length, sampled every 1500 steps and replicated three times to assess model

convergence. Log and tree files were combined with LOGCOMBINER v.2.5.2 (Drummond and Rambaut, 2007) after a 10% burn-in for each run. All parameters in the combined log file had ESS values greater than 200. The Maximum Clade Credibility (MCC) tree was prepared in TREEANNOTATOR v.2.5.2 (Bouckaert et al., 2019) and visualised in FIGTREE v.1.4.4 (<http://tree.bio.ed.ac.uk/software/figtree/>).

For the Blainville's mitogenome phylogeny, a strict clock with a Yule tree model was also applied. Two outgroups were used as they are both closely related to Blainville's (Gray's beaked whale, GenBank accession: NC\_023830.1; Stejneger's beaked whale, *Mesoplodon stejnegeri*, GenBank accession: NC\_036997.1) and their nodes for the MRCA were also calibrated using estimates from McGowen et al. (2019). The calibration node for the Blainville's alignments and the two outgroups was set to the mean age of 5.19 mya (95% probability range 4.12–6.26 mya). The calibration node for the Blainville's alignments with the Stejneger's beaked whale outgroup was set to the mean age of 4.59 mya (95% probability range 3.6–5.58 mya). The Blainville's model needed fewer iterations to converge than the Cuvier's model and hence was set to a 10,000,000 chain length, sampled every 1000 steps and replicated three times to check



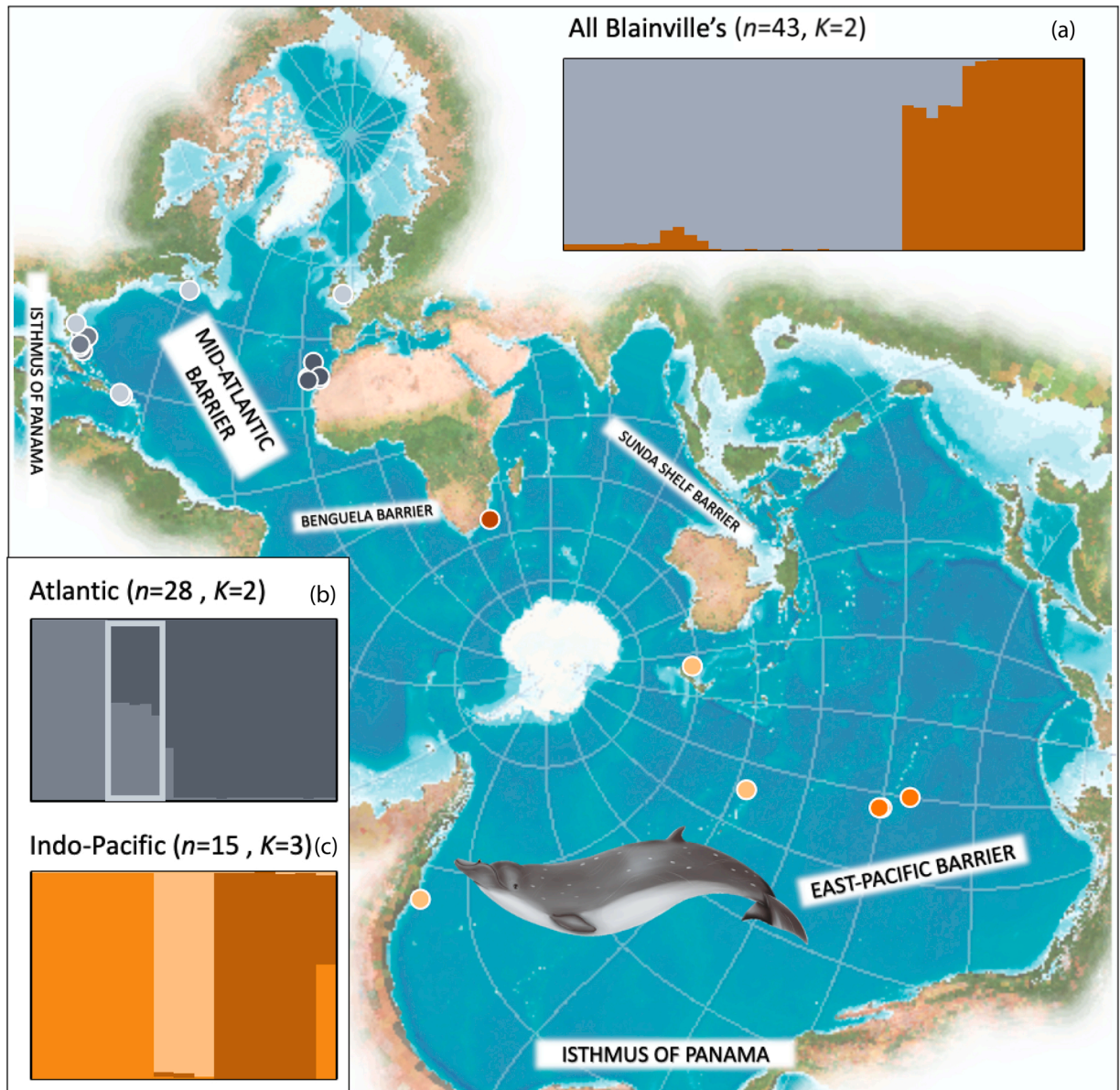
**Fig. 1.** Sampling locations and genetic clustering of Cuvier's beaked whales (*Ziphius cavirostris*,  $n = 123$  individuals,  $n = 30479$  SNPs). Main map shows sample locations plotted on the Spilhaus projection, to highlight the connectivity and continuity of the world's oceans for a globally distributed species, with names and locations of relevant major biogeographical barriers. Bar plots of co-ancestry coefficients generated in 'tess3r' are presented for (a) all samples, (c) Mediterranean (location shown more detail in (b) map inset), (d) Atlantic and (e) Indo-Pacific. The three Indo-Pacific samples enclosed in a red box represent the admixed individuals and are plotted on the map as red points.

for model convergence. The tree and log files were combined, and the output visualized as described for the Cuvier's data.

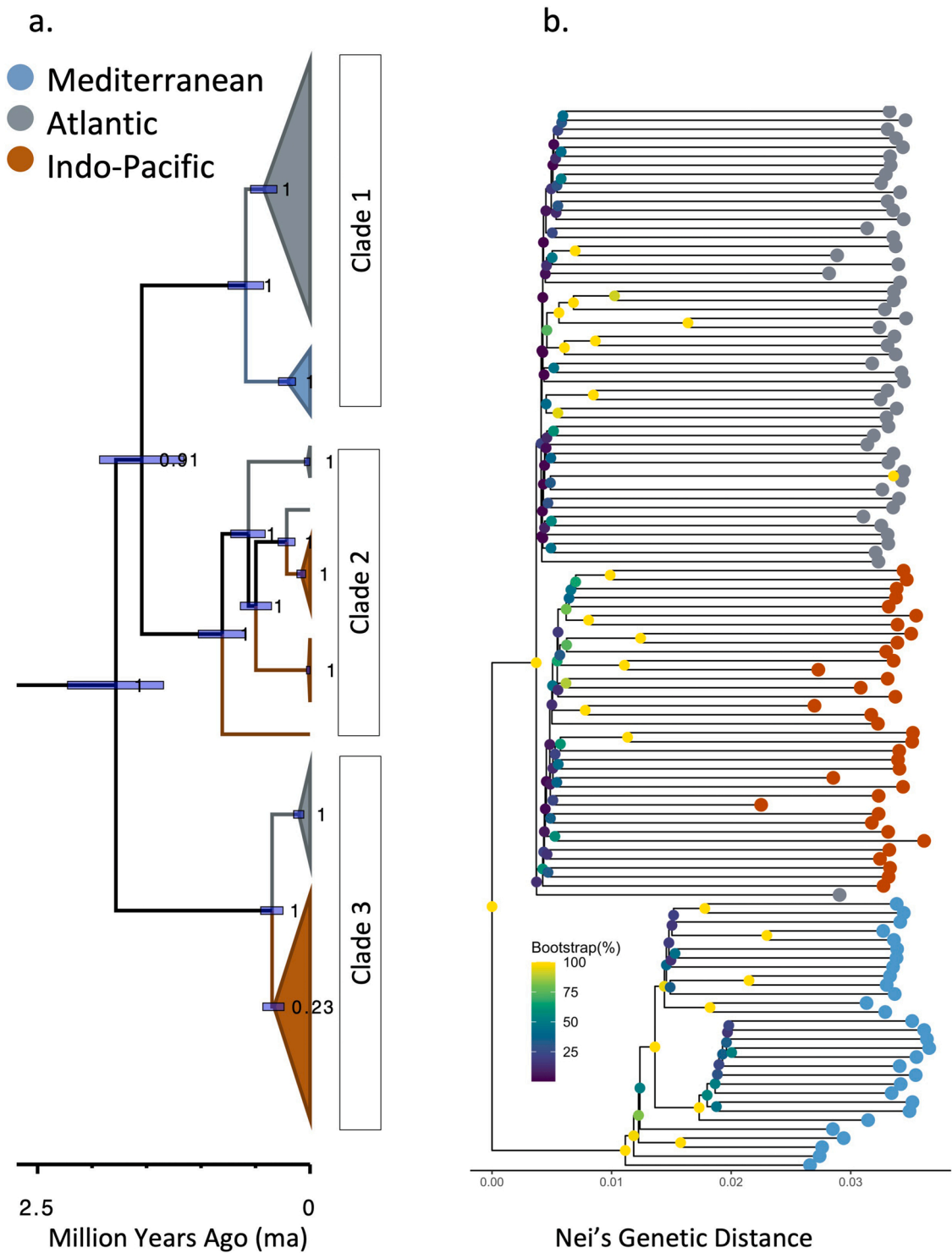
### 2.1.3. Genetic population structure

Isolation by distance (IBD) for the ddRAD SNPs was calculated per species using a Mantel test in 'ade4' v1.7–16 in R (Dray and Dufour, 2007), to compare Euclidean genetic distance and geographical distances calculated via the least-cost (LC) path distance over seawater in 'marmap' v1.0.5 (Pante and Simon-Bouhet, 2013) (ESM6).

We conducted a hierarchical clustering analysis incorporating ddRAD SNPs and geographical information in a spatially explicit, least-squares optimization approach to estimate ancestry in the R package 'tess3r' (v1.1.0, Caye, Jay, Michel, and Francois, 2018). The most likely number of clusters was estimated from a range ( $K=2-10$ ) with  $n = 20$  repetitions and  $n = 200$  maximum iterations of the optimisation algorithm. Cross-entropy scores were plotted against  $K$  values to infer the most likely number (ESM7). When hierarchical spatial structure is likely, genetic clustering algorithms tend to find structure at the highest level of divergence (Evanno et al., 2005). Previous genetic work on the species using mtDNA data (Dalebout et al., 2005; Morin et al., 2012) suggests ocean-basin-level



**Fig. 2.** Distribution and genetic clustering of Blainville's beaked whales (*Mesoplodon densirostris*,  $n = 43$  individuals,  $n = 13988$  SNPs). Main map shows sample locations plotted on the Spilhaus projection, to highlight the connectivity and continuity of the world's oceans for a globally distributed species, with names and locations of relevant major biogeographical barriers. Bar plots of co-ancestry coefficients generated in 'tess3r' are presented for (a) all samples, (b) Atlantic and (c) Indo-Pacific.



**Fig. 3.** Phylogenetic relationship among globally distributed and sampled Cuvier's beaked whales (*Ziphius cavirostris*). (a) Bayesian mitogenome phylogeny generated from 32 unique Cuvier's mitogenome haplotypes with posterior estimates (as a proportion) with divergence shown in million years ago and the purple bars represent the 95% probability range of divergence dates (HPD). (b) BIO neighbour-joining (BIONJ) phylogeny of 118 Cuvier's beaked whales with bootstrapped support for each node > 50% ( $n = 1000$  bootstraps) generated using 33137 nuclear SNPs. The six southern right whales (*Eubalaena australis*) used to root the tree were removed prior to plotting (see [ESM5 Fig. S5.1](#) for tree with outgroup).

differentiation, so we carried out analyses both between and within ocean basins to allow for the detection of finer-scale structure. The genetic clusters determined using ‘tess3r’ were further explored using Discriminant Analysis of Principal Components (DAPC; [ESM8](#); [Jombart, Devillard, and Balloux, 2010](#)). A simulation study suggests that an *a priori* approach to DAPC successfully resolves the composition of the genetic clusters and the genetic distance between clusters correlates well with the value of  $F_{ST}$  used to generate the simulated data ([Miller et al., 2020](#)). On the other hand, *de novo* DAPC analyses perform poorly in situations that are common to marine species; low genetic differentiation and IBD ([Jombart et al., 2010](#); [Miller et al., 2020](#)). Therefore, while we explored both *de novo* and *a priori* DAPC analyses, we only report on the *a priori* results.

We measured the amount of genetic differentiation in the ddRAD data between the defined clusters by calculating pairwise  $F_{ST}$  and 95% confidence intervals (‘dartR’ v1.3.3, based on 100 bootstraps; Weir and Cockerham 1984, [Gruber et al., 2018](#)). Statistical significance of  $F_{ST}$  was determined by permutation test (‘strataG’, based on  $n = 1000$  permutations; [Archer et al., 2017](#)).

In addition, for future comparisons with other studies and criteria recently suggested for species, subspecies and population delineations in cetaceans ([Taylor et al., 2017](#)), we estimated  $F_{ST}$  (and associated p-value) and  $d_A$  (net nucleotide divergence, [Nei, 1987](#), equation 10.21) between ocean basins for full mitogenomes and just the CR with the software package DNAsp v6.12.03 ([Trozas et al., 2017](#)).

#### 2.1.4. Genetic diversity and demographic history

To investigate differences in nuclear genetic diversity across defined populations, we estimated observed heterozygosity ( $H_o$ ) and gene diversity ( $H_s$ ) ([Nei, 1987](#)), and the inbreeding coefficient ( $F_{is}$ ) ([Weir and Cockerham, 1984](#)) using ‘hierfstat’ v.0.4.22 ([Goudet, 2005](#)), and Tajima’s D ([Tajima, 1989](#)) using VCFtools v 0.1.12a ([Danecek et al., 2011](#)) for the ddRAD SNP dataset. Diversity and inbreeding statistics were calculated per locus and Tajima’s D was calculated based on a 100 kb sliding window for each genetic cluster. Confidence intervals (95%) were calculated around mean  $H_o$ ,  $H_s$  and Tajima’s D using ‘rcompanion’ (v2.3.25;  $n = 1000$  bootstraps; [Mangiafico, 2020](#)) and ‘boot.ppfs’ in ‘hierfstat’ ( $n = 100$  bootstraps) for the  $F_{is}$  values. Mitochondrial DNA genetic diversity (segregating sites (S), number of haplotypes (h), haplotype diversity ( $H_d$ ) and nucleotide diversity ( $\pi$ )) were calculated separately for the mitogenome and CR data, for each species and ocean basin, using DNAsp.

### 3. Results

The final Cuvier’s dataset included 30479 ddRAD SNPs (mean=29697 SNPs per individual, SE=72) from 123 Cuvier’s individuals ([Fig. 1](#), [ESM9](#)) as well as mitogenomes (15291 bp) and CR (860 bp) sequences from 35 individuals ( $n = 22$  downloaded from GenBank, [SST3](#);  $n = 13$  generated for this study, [SST4](#)). The final Blainville’s dataset included 13988 ddRAD SNPs (mean=13760 SNPs per individual, SE=64) from 43 individuals ([Fig. 2](#), [ESM9](#)), as well as mitogenomes (14147 bp) and CR (852 bp) sequences from 27 individuals ( $n = 15$  downloaded from GenBank, [SST3](#);  $n = 12$  generated for this study, [SST4](#)). Overall, both ddRAD datasets had low levels of missing data (2.6% in Cuvier’s and 1.6% in Blainville’s across the entire datasets) and the depth of coverage was high both per ddRAD SNP (Cuvier’s: mean=59x, SE=4; Blainville’s: mean=60x, SE=4, [ESM9](#)) and mitogenome (Cuvier’s: mean=156x, SE=23; Blainville’s: mean=158x, SE=21, [SST4](#)). The final datasets used to generate the ddRAD phylogenetic trees were  $n = 118$  Cuvier’s ( $n = 33137$  SNPs) and  $n = 42$  Blainville’s ( $n = 29904$  SNPs), with six southern right whales as the outgroup ([ESM5](#)).

#### 3.1. Cuvier’s beaked whales

##### 3.1.1. Phylogeography and genetic population structure

The Cuvier’s exhibited substantial phylogeographic and population genetic structure in both the nuclear ddRAD SNPs and the mitogenomes. The mitogenome phylogeny of 35 Cuvier’s indicated a separation into three major clades with high levels of support ([Fig. 3a](#)); Clade 1 contained lineages sampled exclusively in the North Atlantic (including the Mediterranean), whereas Clades 2 and 3 contained individuals from the western North Atlantic, and divided Indo-Pacific lineages (and one from Argentina) broadly along the equator ([Fig. 3a](#), see [SST1](#) for individual metadata and clade assignments). Individuals from the North Atlantic (Clade 1) appear to have diverged from the mostly Indo-Pacific Clade 2 approximately 1.5 mya, while the individuals in the Mediterranean diverged from the rest of the North Atlantic approximately 0.5 mya ([Fig. 3a](#)). Unlike the paraphyletic mitogenome phylogeny, the BIONJ phylogeny based on the final ddRAD SNP data consisting of 33137 SNPs genotyped in 118 Cuvier’s ([ESM5](#)) and 6 SRW outgroup showed clearer monophyly of Atlantic and Indo-Pacific Ocean clades ([Fig. 3b](#)). Like the mitogenome phylogeny, the Mediterranean forms a separate monophyletic clade in the ddRAD BIONJ phylogeny ([Fig. 3b](#) and [ESM5 Figure S5.1](#)).

In the ‘tess3r’ analysis based on ddRAD SNPs, the most likely number of genetic clusters for the 123 Cuvier’s was  $K=3$  ([Fig. 1a](#) and [ESM7](#), [Figure S7.1](#)), clearly dividing samples from the Atlantic, Mediterranean and Indo-Pacific ([Fig. 1a](#)). This was supported by statistically significant levels of pairwise differentiation between samples from the Atlantic and the Indo-Pacific in both mtDNA (mitogenome  $F_{ST} = 0.178$ , CR  $F_{ST} = 0.241$ ,  $p < 0.01$ , [SST5](#)) and nuclear markers (ddRAD  $F_{ST} = 0.018$ ,  $p < 0.01$ , [SST6](#)). Substantial differentiation was also seen between samples from the Mediterranean and the Atlantic and Indo-Pacific in both the mtDNA (mitogenome  $F_{ST} = 0.623$  and 0.375, CR  $F_{ST} = 0.531$  and 0.347, respectively, [SST5](#)) and nuclear (ddRAD  $F_{ST} = 0.184$  and  $F_{ST} = 0.197$ ,  $p < 0.01$ , respectively; [SST6](#)) markers. Net nucleotide differences showed the same pattern as the CR ([SST5](#)).

In addition to ocean-level genetic structure, the Cuvier’s ddRAD SNPs revealed finer scale structure within ocean basins where the most likely number of genetic clusters within the North Atlantic was  $K= 5$  clusters,  $K= 3$  in the Indo-Pacific and  $K= 2$  in the Mediterranean ([Fig. 1b-e](#) and [ESM7 Figure S7.1](#)). In the Mediterranean ([Fig. 1b-c](#)), distinct structure was present between the west and east. Within the North Atlantic, there was little admixture and individuals grouped into five discrete clusters, reflecting their general

**Table 1**

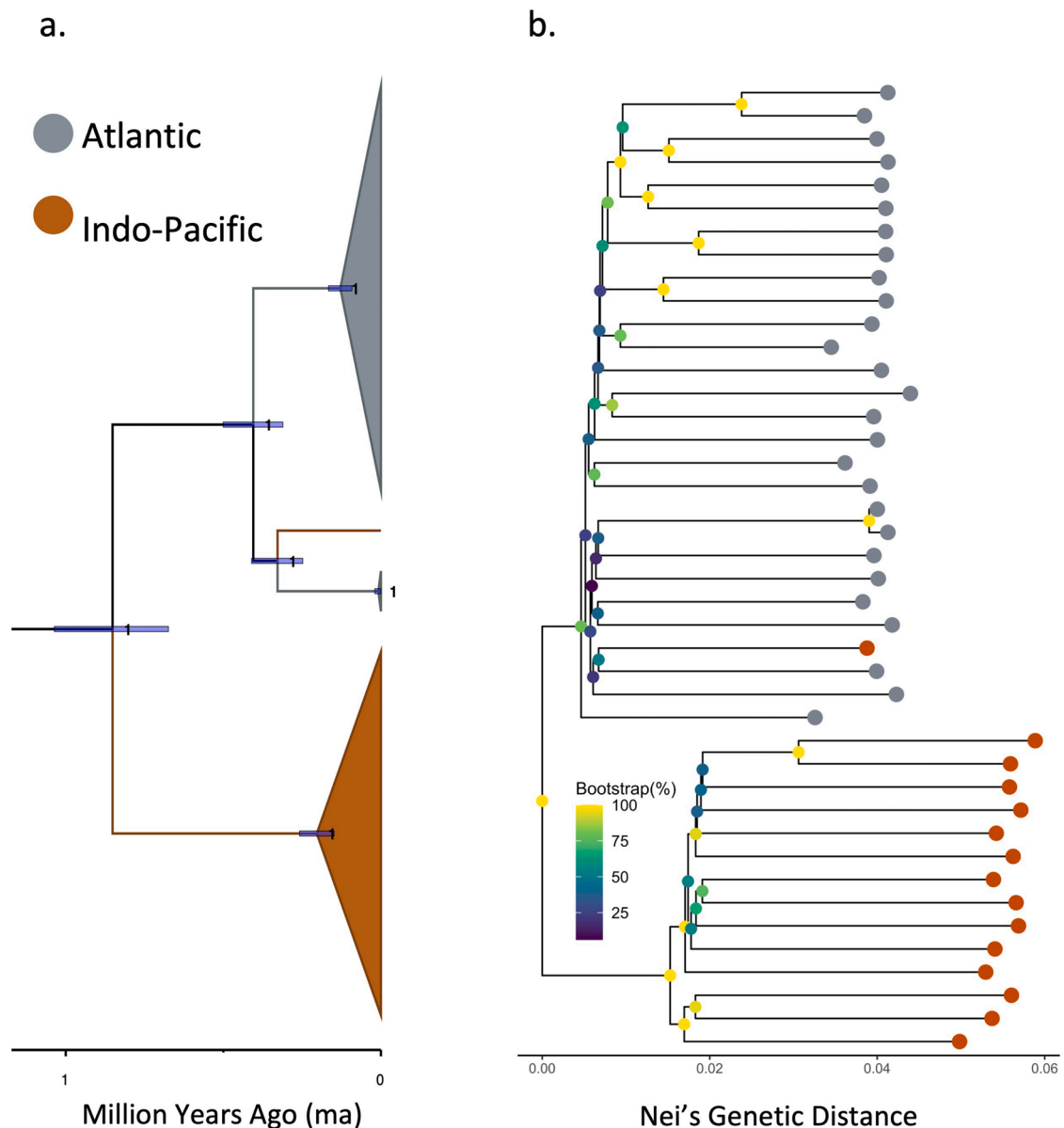
Nuclear diversity statistics calculated from ddRAD SNPs (Cuvier's:  $n = 30479$ , Blainville's:  $n = 13988$ ): Mean and 95% confidence intervals (in brackets) are provided for each ocean basin and genetic cluster of observed heterozygosity ( $H_o$ ; Nei, 1987) gene diversity ( $H_s$ ; Nei, 1987), inbreeding coefficient ( $F_{is}$ ; Weir and Cockerham, 1984) and Tajima's D (100 kb sliding window). Mitogenomic diversity statistics are provided for whole mitogenomes and mtDNA control region (in brackets) for each ocean basin: no. segregating sites (S), no. of haplotypes (h), haplotype diversity ( $H_d$ ) and nucleotide diversity ( $\pi$ ).

	Population	ddRAD					mtDNA					
		$n$	$H_o$	$H_s$	$F_{is}$	Tajima's D	$n$	S	h	$H_d$	$\pi$	
<b>Cuvier's</b>	<b>Atlantic</b>	<b>54</b>	<b>0.112</b> (0.111, 0.113)	<b>0.128</b> (0.126, 0.129)	<b>0.121</b> (0.117, 0.125)	<b>-0.279</b> ( -0.289, -0.270)	<b>18</b>	<b>462</b> (14)	<b>17</b> (9)	<b>0.993</b> (0.882)	<b>0.0097</b> (0.0048)	
	Atl_Carib	15	0.113 (0.111, 0.114)	0.127 (0.125, 0.128)	0.115 (0.110, 0.121)	-0.33 (-0.342, -0.318)						
	Atl_CanIs	17	0.111 (0.110, 0.113)	0.126 (0.124, 0.128)	0.121 (0.115, 0.127)	-0.304 (-0.316, -0.291)						
	Atl_France	5	0.112 (0.110, 0.114)	0.127 (0.124, 0.129)	0.116 (0.108, 0.125)	-0.25 (-0.267, -0.233)						
	Atl_NE	15	0.112 (0.111, 0.114)	0.126 (0.124, 0.127)	0.110 (0.104, 0.115)	-0.374 (-0.387, -0.361)						
	<b>Indo-Pacific</b>	<b>36</b>	<b>0.109</b> (0.107, 0.110)	<b>0.123</b> (0.122, 0.125)	<b>0.118</b> (0.114, 0.122)	<b>-0.306</b> ( -0.0316, -0.295)	<b>14</b>	<b>344</b> (9)	<b>13</b> (6)	<b>0.989</b> (0.747)	<b>0.0079</b> (0.0041)	
	Indo_Central	5	0.103 (0.101, 0.105)	0.119 (0.117, 0.121)	0.141 (0.131, 0.151)	-0.177 (-0.195, -0.159)						
	Indo_NE	19	0.111 (0.109, 0.112)	0.122 (0.121, 0.124)	0.097 (0.092, 0.102)	-0.302 (-0.314, -0.290)						
	Indo_South	9	0.110 (0.108, 0.112)	0.124 (0.122, 0.125)	0.110 (0.104, 0.118)	-0.337 (-0.351, -0.322)						
	<b>Mediterranean</b>	<b>33</b>	<b>0.078</b> (0.077, 0.080)	<b>0.089</b> (0.088, 0.091)	<b>0.122</b> (0.116, 0.128)	<b>0.443</b> ( 0.424, 0.462)	<b>3</b>	<b>47</b> (5)	<b>3</b> (3)	<b>1.000</b> (1.000)	<b>0.0021</b> (0.0039)	
	Med_East	14	0.072 (0.070, 0.074)	0.078 (0.076, 0.080)	0.080 (0.071, 0.088)	0.386 ( 0.363, 0.408)						
	Med_West	19	0.083 (0.082, 0.085)	0.090 (0.089, 0.092)	0.077 (0.070, 0.084)	0.407 ( 0.388, 0.427)						
	<b>Blainville's</b>	<b>Atlantic</b>	<b>28</b>	<b>0.105</b> (0.103, 0.108)	<b>0.114</b> (0.112, 0.117)	<b>0.078</b> (0.070, 0.085)	<b>-0.073</b> ( -0.097, -0.050)	<b>16</b>	<b>164</b> (9)	<b>13</b> (7)	<b>0.975</b> (0.800)	<b>0.0028</b> (0.0030)
		Atl-Bah	7	0.102 (0.099, 0.105)	0.110 (0.107, 0.113)	0.064 (0.048, 0.080)	0.038 ( 0.007, 0.065)					
Atl-East		16	0.106 (0.104, 0.109)	0.113 (0.110, 0.115)	0.073 (0.059, 0.087)	0.015 (-0.012, 0.041)						
Atl-Oth		5	0.106 (0.103, 0.110)	0.114 (0.110, 0.117)	0.057 (0.048, 0.066)	-0.017 (-0.046, 0.014)						
<b>Indo-Pacific</b>		<b>14</b>	<b>0.127</b> (0.125, 0.129)	<b>0.141</b> (0.138, 0.143)	<b>0.098</b> (0.090, 0.105)	<b>-0.450</b> ( -0.468, -0.431)	<b>11</b>	<b>312</b> (11)	<b>10</b> (9)	<b>0.982</b> (0.964)	<b>0.0050</b> (0.0040)	
Indo-Haw		6	0.125 (0.121, 0.128)	0.142 (0.139, 0.145)	0.124 (0.111, 0.137)	-0.285 (-0.309, -0.260)						
Indo-Afr		5	0.128 (0.125, 0.131)	0.137 (0.133, 0.140)	0.062 (0.052, 0.076)	-0.263 (-0.287, -0.238)						
Indo-Sou		3	0.127 (0.124, 0.131)	0.138 (0.135, 0.142)	0.079 (0.060, 0.095)	-0.217 (-0.245, -0.191)						



geographical sampling location (Fig. 1d). Intriguingly, four individuals from Puerto Rico and the Virgin Islands shared low levels of admixed ancestry (<30%), suggesting connectivity with the other North Atlantic clusters. One cluster consisted of only two individuals from Spain, and was not included in further analyses. Furthermore, all pairwise ddRAD SNP  $F_{ST}$  values were significant ( $p < 0.05$ ), except for between the France and Canary Island clusters in the Atlantic (SST6). Within the Indo-Pacific, Cuvier's subclusters also corresponded with the geographical origin of samples (Fig. 1e). Here, the broadest distribution of samples was found in the South Indo-Pacific (Indo\_Sou). Three admixed individuals from the Philippines, Chile and Samoa shared most of their ancestry coefficient with the remaining South Indo-Pacific individuals (South Africa, Australia, and Aotearoa New Zealand), and were not included in the remaining analyses.

As DAPC and 'tess3r' analyses produced similar results, and because 'tess3r' is expected to perform better in the presence of admixture and IBD (reviewed in Francois and Waits 2016), we present the DAPC analyses primarily in the [Supplementary Material](#)



**Fig. 4.** Phylogenetic relationship among globally distributed and sampled Blainville's beaked whales (*Mesoplodon densirostris*). (a) Bayesian mitogenome phylogeny generated from 23 unique Blainville's mitogenome haplotypes with posterior estimates (as a proportion) with divergence shown in million years ago (ma) and the purple bars represent the 95% probability range of divergence dates (HPD). (b) BIO neighbour-joining (BIONJ) phylogeny of 42 Blainville's beaked whales with bootstrapped support for each node > 50% ( $n = 1000$  bootstraps) generated using 29904 SNPs. The six southern right whales (*Eubalaena australis*) used to root the tree were removed prior to plotting (for tree with outgroup see [ESM5, Fig. S5.2](#)).

(ESM8). The first axis in the DAPC separates the two Mediterranean clusters from the North Atlantic and Indo-Pacific ones (ESM Fig. S8.1). The second axis separates clusters from the Indo-Pacific from the North Atlantic, as well as those from the east and west Mediterranean. Finer-scale differentiation between clusters within ocean basins is observed when the 2nd vs 3rd (ESM Fig. S8.3) and 3rd vs 4th (ESM Fig. S8.4) axes are plotted. Samples were reassigned to the a-priori clusters with high probability, except for a few samples in the eastern North Atlantic and Indo-Pacific clusters (S8.1).

Isolation-by-distance was present and significant when all Cuvier's samples were combined and within ocean basins (ESM6, Table S6.1).

### 3.1.2. Genetic diversity and demography

Genetic diversity summary statistics ( $H_o$ ,  $H_s$ ,  $F_{is}$ , and Tajima's D) and their 95% confidence intervals are presented for the 118 Cuvier's that were assigned a genetic cluster (i.e., not admixed, Table 1). Overall, the inbreeding coefficient  $F_{is}$  ranged widely amongst Cuvier's clusters within ocean basins ( $F_{is}=0.077-0.141$ ; Table 1). Mitogenome haplotype diversity was very high, with only one haplotype shared between two individuals from the Bahamas, and one shared between one Irish and two Canary Islands individuals (SST7). However, both the overall Mediterranean dataset and populations therein had positive values of Tajima's D (indicative of population contraction), the lowest levels of diversity and inbreeding ( $H_o$ ,  $H_s$ , and  $F_{is}$ ; Table 1), and the lowest mtDNA diversity ( $\pi$  and S, Table 1, SST5). Slightly greater overall diversity values were seen in the North Atlantic, compared to the Indo-Pacific, in both the ddRAD and mtDNA data (Table 1). All sample partitions outside of the Mediterranean had negative values of Tajima's D, indicative of population expansion (Table 1).

## 3.2. Blainville's beaked whales

### 3.2.1. Genetic population structure and phylogeography

The mitogenome phylogeny of 23 unique Blainville's lineages showed clear division between the Indo-Pacific and North Atlantic, which occurred  $\sim 0.75$  mya (Fig. 4a). One individual from Car Nicobar, Bay of Bengal, was nested within the North Atlantic clade, near the base of the group (Fig. 4a, SST1). No ddRAD data was available for this individual to compare locations in the phylogenies. Significant genetic clustering according to ocean basin (100% bootstrap support) was also found in the BIONJ phylogeny of 42 ddRAD Blainville's and the 6 SRW used as an outgroup (Fig. 4b and ESM5, figure S5.2). One individual sampled in South Africa was nested within the North Atlantic individuals. No mitogenome data were available to compare phylogenies for this individual.

In the 'tess3r' analyses based on ddRAD SNPs, the most likely number of genetic clusters of the  $n = 43$  Blainville's was  $K = 2$ , corresponding with North Atlantic and Pacific Oceans (Fig. 2 and ESM7 Figure S7.2). Blainville's samples from South Africa also clustered with individuals from the Pacific, forming an Indo-Pacific cluster. The pairwise difference between the North Atlantic and Indo-Pacific clusters in Blainville's was substantial and statistically significant (ddRAD  $F_{ST}=0.119$ ,  $p < 0.001$ , SST6), and greater than the parallel differentiation between North Atlantic and Indo-Pacific Cuvier's clusters (ddRAD  $F_{ST}=0.018$ ,  $p < 0.01$ , SST6). Mitogenomic differentiation between the North Atlantic and Indo-Pacific clusters was also statistically significant ( $p < 0.01$  for all comparisons) and extremely high (mitogenome  $F_{ST} = 0.711$ , CR  $F_{ST} = 0.328$ , SST5). Net nucleotide divergence between ocean basins was  $d_A = 0.0097$  (mitogenome) and  $d_A = 0.0017$  (CR) (SST5).

Like the Cuvier's, the ddRAD SNP data revealed considerable within-ocean-basin structure, with individuals grouping best into  $K=2$  Atlantic and  $K=3$  Indo-Pacific genetic clusters (Fig. 2a-c). Five individuals from across the North Atlantic (Atl\_Oth, Fig. 2b) clustered together with equal amounts of admixture from the Bahamas and eastern North Atlantic clusters. Blainville's from South Africa (Indo\_Afr) formed a cluster separate from the large South Pacific (Indo\_Sou) cluster (Fig. 2c). One sample from New Zealand was equally admixed between the South African and Hawaiian clusters and was therefore removed from the remaining analyses. All pairwise  $F_{ST}$  comparisons of clusters between ocean basins were highly differentiated and statistically significant (SST6).

In support of the 'tess3r' analyses, the first axis in the DAPC broadly separates the North Atlantic from the Indo-Pacific clusters, with the South African cluster spanning both sides (ESM8 Fig. S8.2). The second axis separates the east from the western North Atlantic clusters, while in the Indo-Pacific it divides the Hawaiian and southern Indo-Pacific individuals. Individuals were reassigned to the a priori clusters with high probability and few misassignments (ESM8 Fig. S8.1).

Finally, IBD was found for all Blainville's samples analysed together and within ocean basins (ESM6, Table S6.1), with two clearly separated patches of points in the Atlantic Blainville's suggesting genetic sub-structuring (ESM6, Fig. S6.2).

### 3.2.2. Genetic diversity and demography

Nuclear ddRAD diversity summary statistics and their 95% confidence intervals are presented for 42 Blainville's that assigned to a cluster, and mtDNA statistics are provided for whole mitogenomes and mtDNA CR data in Table 1. The overall Indo-Pacific dataset and clusters therein had higher levels of diversity ( $H_o$  and  $H_s$ ) and inbreeding ( $F_{is}$ ) compared with the North Atlantic cluster, a pattern also reflected in the mitochondrial data (Table 1). One mitogenome haplotype was shared between two individuals sampled in Hawai'i and three pairs from the Bahamas shared unique haplotypes (SST7). Both oceanbasin clusters had negative Tajima's D values, though the North Atlantic value was very close to 0 ( $D = -0.073$ ) indicating long-term population size stability. Within ocean basins, all Indo-Pacific clusters and only the admixed North Atlantic (Atl-Other) cluster had negative Tajima's D values (Table 1), indicative of increasing population sizes. The remaining North Atlantic clusters showed positive Tajima's D values, signalling population declines (Table 1).

#### 4. Discussion

Here we show that two deep-sea predators, the Cuvier's and Blainville's beaked whales, exhibit substantial hierarchical population structure on a global scale and substantial regional genetic differentiation on ocean basin scale. At a macroevolutionary scale, this suggests that patterns of spatial genetic structure can vary between deep-sea species depending on their evolutionary history as other similar predators demonstrate e.g., panmixia (Westbury et al., 2021; Winkelmann et al., 2013) or IBD (Amaral et al., 2012; Gonçalves da Silva et al., 2020). At a microevolutionary scale, we propose that patterns of gene flow and genetic drift are shaped by life history traits and site fidelity in Blainville's and Cuvier's. These microevolutionary processes may be similar to those thought to influence other deep-sea marine mammals, such as island preference (Albertson et al., 2017; Van Cise et al., 2017), social structure and prey specialisation (Foote et al., 2016; Martien, Taylor et al., 2019).

Recently, genetic structure has been identified in several other beaked whale species. At a global scale, recent work indicated that True's beaked whales (*Mesoplodon mirus*) in the Northern and Southern Hemispheres had been separated for 0.5–2 mya, resulting in the designation of a new species in the south (*M. eueu*, Carroll et al., 2021). At an ocean basin level, population structure or IBD was detected in Baird's beaked whale (*Berardius bairdii*, Morin et al., 2017) across the North Pacific, and the genetic divergence measured between the "black" and "gray" stocks using the mtDNA CR was found to represent separate species within the genus, *B. minimimus* and *B. bairdii*, respectively (Morin et al., 2017; Yamada et al., 2019). The beaked whale species with the most genetic studies is the northern bottlenose whale (*Hyperoodon ampullatus*), which is found exclusively in the North Atlantic (Dalebout et al., 2006; Dalebout et al., 2001; de Greef et al., 2022; Feyrer et al., 2019). Northern bottlenose whales show genetic structure and IBD across their range, likely through philopatry linked to bathymetric features like the "Gully" canyon (Dalebout et al., 2006), with resulting conservation management implications (COSEWIC, 2011). Thus, though notably absent from Gray's beaked whale (Thompson et al., 2016; Westbury et al., 2021), some degree of genetic structuring appears to be present in the beaked whale species studied at global and regional scales. We add to the sparse knowledge about beaked whale population structure, by discussing drivers of Cuvier's and Blainville's genetic structure at macro- and microevolutionary scales, and discuss the conservation management implications of this work.

##### 4.1. Macroevolutionary drivers of genetic population structure in Cuvier's and Blainville's

Biogeographical barriers on both global and regional scales (Toonen et al., 2016) have been known to influence patterns of genetic structure in widely-distributed marine species (e.g., Clarke et al., 2015; Gaither et al., 2016; Leslie et al., 2018). Such barriers can be fully impassable (if only recently in geological history; such as the Isthmus of Panama), whereas others are likely physically passable features, such as shallow rises (e.g., the Siculo-Tunisian Strait; Bianchi and Morri, 2000; Mejri et al., 2009), and expanses of deep sea (e.g., East Pacific and Mid-Atlantic Ridge Barriers; Toonen et al., 2016). At a global scale, the genetic structuring found here in Cuvier's and Blainville's appears to be shaped by such biogeographical barriers previously highlighted in the marine realm, including the Isthmus of Panama, East-Pacific Barrier, Mid-Atlantic Ridge, Benguela Shelf and Sunda Shelf. These barriers vary in permeability between our focal species, primarily due to differences in the timing and geography of each species' origin and spread across the globe (e.g., before or after the formation of the Isthmus of Panama).

Blainville's demonstrate a significant genetic distinction between North Atlantic and Indo-Pacific clusters, supporting the previous mitogenome phylogeny showing reciprocal monophyly to ocean basin (Morin et al., 2012). In contrast, Cuvier's mtDNA CR previously showed no monophyly, but significant haplotype frequency differences between basins, indicating high and significant levels of differentiation (Dalebout et al., 2005; Morin et al., 2012). With additional mitogenomes and nuclear SNPs, we were able to extend these results for Cuvier's and show ocean-specific clades, greatly refining our understanding of genetic structuring in this species. This is similar to what was found in northern bottlenose whales, where additional population structure was identified when nuclear genomes were added to the analysis (Dalebout et al., 2006; de Greef et al., 2022).

The estimated divergence dates of the deepest splits that separate primarily North Atlantic and Indo-Pacific clades (Cuvier's: ~1.5–2 mya Fig. 3b) support a role of the formation of the Isthmus of Panama (O'Dea et al., 2016) in driving genetic structure in Cuvier's, as it has in other odontocete species (Amaral et al., 2012; da Silva et al., 2015; Van Cise et al., 2019). The later divergence date for Blainville's (~0.75 mya, Fig. 4b) suggests a link to the Mid-Pleistocene Transition (MPT), which is noted for its overall cooling of sea-surface temperatures, elongation and cooling of glaciation cycles, and northward shift of Antarctic polar fronts (Clark et al., 2006; Kemp et al., 2010). The resulting cooling of tropical waters is hypothesised to have driven the speciation between *M. mirus* and *M. eueu* as well (Carroll et al., 2021). Thermal constraints linked to the smaller body size of Blainville's compared to Cuvier's may determine the former's contemporary southerly limit, which coincides with the Southern Ocean Sub-Tropical Front (STF; Graham and De Boer, 2013; Pitman et al., 2020). A northward shift of the STF during the MPT would have further limited migration between the North Atlantic and Indo-Pacific via the southern tip of South America and potentially South Africa. Therefore, we posit that oceanographic conditions and thermal constraints may have reduced gene flow between Atlantic and Indo-Pacific Blainville's populations compared with those of Cuvier's. Given the well-described relationship in mammals between body size and lifespan (Blueweiss et al., 1978), we also hypothesise that genetic drift and subsequent differentiation could have occurred more quickly in Blainville's compared with Cuvier's, although we acknowledge that many factors can contribute to genetic drift (Leroy et al., 2017).

The East Pacific and Mid-Atlantic Ridge Barriers are large stretches of deep and open water that fall within the oligotrophic centres of the ocean and may act as "nutritional" barriers. Beaked whales prefer productive habitats with complex bathymetry, including underwater canyons and deep slopes (MacLeod and D'Amico, 2006), and no sightings records of Cuvier's nor Blainville's exist within the open areas of the East Pacific basin and the Mid-Atlantic (OBIS, 2021: although such surveys are difficult to conduct effectively; Barlow et al., 2006). The Benguela and Sunda Shelf Barriers may also influence Cuvier's and Blainville's population structure.

However, small sample sizes from the Southern Ocean mean further sampling will be needed to clarify the relevance of these barriers as the Southern basins are connected via the Antarctic Circumpolar Current, and the resulting productive convergence zones could promote connectivity of species across wide geographical expanses, limiting genetic differentiation (e.g. Gray's beaked whales; Thompson et al., 2016; Westbury et al., 2021).

Genetic discontinuities are well documented across the Strait of Gibraltar that separates the North Atlantic and Mediterranean Sea in many marine taxa (Patarnello et al., 2007), including a number of odontocetes (e.g. Gaspari et al., 2007; Kraft et al., 2020). Here, we find genetic structuring not only between the North Atlantic and Mediterranean, but also within the Mediterranean, a pattern found in other odontocetes (Gaspari et al., 2007, 2019; Gkafas et al., 2017). A small amount of gene flow from individuals in the North Atlantic entering the Mediterranean may be driving higher genetic diversity in the western Mediterranean populations. Alternatively, sequential founder effects may have resulted in lower diversity in the eastern Mediterranean populations. Further investigation of the evolutionary history of Cuvier's in the Mediterranean requires samples from the Alborán Sea population (Cañadas and Vázquez, 2014).

#### 4.2. Microevolutionary drivers of genetic population structure in Cuvier's and Blainville's

Physiology, life history, behaviour, and dispersal capabilities have also likely contributed to the population structure and genetic diversity patterns of Cuvier's and Blainville's observed in our work. Cuvier's are considerably larger than Blainville's (MacLeod, 2005), make deeper dives (Baird, 2019) and occupy a greater geographical range (including the circumpolar Southern Ocean; MacLeod et al., 2005). Such factors increase the potential connectivity of Cuvier's populations in the Southern Hemisphere, though the substantial genetic structure between the North Atlantic and Indo-Pacific clusters indicates the low likelihood of individuals travelling great distances between ocean basins.

Blainville's and Cuvier's often live in small, resident populations around island groups (Baird, 2019; Hooker et al., 2019), where such philopatry could enhance inter-oceanic distinctiveness, regardless of the presence of biogeographical barriers. Such site fidelity is also seen in northern bottlenose whales from the Scotian Shelf, where their preference for the submarine canyons of the "Gully" has led to genetic distinctiveness from other populations (Dalebout et al., 2006; de Greef et al., 2022). Some genetic clusters from areas of known site fidelity observed via tagging and/or long-term photo ID studies such as Cuvier's from the Canary Islands (Reyes, 2018) and Blainville's from the Bahamas (Claridge, 2006, 2013), have slightly lower diversity compared to the remaining North Atlantic clusters. In contrast, tagging studies indicate that Blainville's from Hawai'i belong to either a resident or oceanic population (Baird et al., 2011), and we found these to have greater genetic diversity and lower inbreeding coefficients than their island-associated Cuvier's counterparts. Improving abundance and residency estimates in areas without dedicated photo-identification studies will help to determine the role of site fidelity and ongoing gene flow in shaping genetic diversity in these species.

#### 4.3. Proposed management units for conservation strategies

Genetic structure has now been found in most of the beaked whale species studied to date (see discussion above), suggesting that genetically structured populations may be a common feature of the ziphiids. Many of these species surveyed to date are known to occur at low abundances in small, localized populations, which given their substantial site-fidelity and population structure, may render them particularly vulnerable to human disturbances (Hooker et al., 2019).

Maintenance of genetic diversity within populations is a priority for conservation and management measures, and small

**Table 2**

Sampling locations, sample size and 'tess3r' population ID across and within ocean basins for Cuvier's (*Ziphius cavirostris*,  $n = 123$  individuals,  $n = 30479$  SNPs) and Blainville's beaked whales (*Mesoplodon densirostris*,  $n = 43$  individuals,  $n = 13988$  SNPs). Proposed ESUs formed distinct genetic clusters in 'tess3r' that corresponded to distinct geographic regions and significant ddRAD  $F_{ST} > 0.01$ . Proposed DIPs were based on resident populations investigated by long-term photo ID and telemetry studies and differentiated by significant  $F_{ST}$ . Abbreviations include Med for Mediterranean and S. Hem for Southern Hemisphere, and cardinal compass points abbreviated to their first letter (e.g., west is W).

Species	Ocean Basin	Population ID	$n$	Sampling Region	Sampling Locality	Proposed ESUs	Proposed DIPs
Cuvier's	Atlantic	Atl_Carib	15	Caribbean	Bahamas, East USA, Puerto Rico, Virgin Islands	NW Atlantic	
		Atl_CanIs	17	Canary Islands	Canary Islands	NE Atlantic	Canary Islands
		Atl_NE	15	NE Atlantic	Madeira, France, Ireland, Scotland		
		Atl_Sp	2	Spain	Spain		
		Atl_France	5	France	France		
	Indo-Pacific	Indo_Cent	5	Central Pacific	Hawai'i, Johnston Atoll	Central Pacific	Hawai'i
		Indo_Sou	9	S. Indo-Pacific	Australia, New Zealand, South Africa	S Hem	
		Indo_NE	19	NE Indo-Pacific	Mexico, West Canada, West USA	NE Pacific	
		Indo_Mix	3	S. Indo-Pacific	Chile, Samoa, Philippines		
		Med	Med_West	19	W. Med	Corsica, Italy-Ligurian Sea	W Med
Med_East	14		E. Med	Croatia, Italy-Ionian Sea, Greece, Israel	E Med	E Med	
Blainville's	Atlantic	Atl_Bah	7	Bahamas	Bahamas	NW Atlantic	Bahamas
		Atl_East	16	E. Atlantic	Madeira, Canary Islands	NE Atlantic	Canary Islands
		Atl_Oth	5	Admixed Atlantic	East USA, Puerto Rico, Canada, UK		
	Indo-Pacific	Indo_Haw	6	Hawaii	Hawai'i	Central Pacific	Hawai'i
		Indo_Afr	5	S. Africa	South Africa	S Hem	
		Indo_Sou	3	S. Pacific	French Polynesia, Chile		

populations, such as those observed in many beaked whales (Hooker et al., 2019), are more susceptible to genetic erosion (Leroy et al., 2017). Consequences of genetic erosion include inbreeding depression, accumulation of deleterious alleles, maladaptation, and reduced adaptive potential to climate change, and hence monitoring of genetic diversity is imperative for the management and conservation of wild populations (Leroy et al., 2017). In particular, multiple populations of Blainville's and Cuvier's have been subject to repeated UMEs, including in the Ligurian Sea where more than 35 Cuvier's mortalities have occurred as a result of UMEs since the 1960s, corresponding to a loss of approximately 1/3 of the current estimated population size (Podestà et al., 2006, 2016). Similar incidences have impacted Cuvier's in Puerto Rico and the Virgin Islands, coinciding with US Navy activity between the 1960s and 2000 (Mignucci-Giannoni, 1996; Mignucci-Giannoni and Rosario-Delestre, 1998). In the eastern North Atlantic, UMEs between 2008 and 2018 involved nearly 200 deep-diving whales, around half of which were Cuvier's (Brownlow et al., 2014, 2018; Dolman et al., 2010). Given that only a small proportion of dead animals reach land during UMEs, and there are estimated to be less than 2300 Cuvier's in the eastern North Atlantic (Rogan et al., 2017), these events may have had substantial impacts on the species. The classification of taxonomic and management units below species is therefore necessary to determine how these human activities are impacting populations with respect to conservation objectives, and investigate the potential evolutionary consequences such activities may have (Taylor et al., 2017).

In Table 2, we propose both ESUs; important evolutionary components of a species which are necessary for maintaining genetic variability and successfully responding to future environmental changes (Taylor et al., 2010; Waples, 1995), and DIPs; population units that depend on internal demographic dynamics rather than immigration (Martien et al., 2019; Palsbøll et al., 2007; Taylor et al., 2010; Waples and Gaggiotti, 2006).

Nearly reciprocal monophyly to ocean basin in both the mitogenomic and ddRAD phylogenies and minimal amounts of admixture between ocean basins in the cluster analysis provide clear and strong evidence that populations are on separate evolutionary trajectories, consistent with distinct ESUs. To quantify and further demonstrate the distinctiveness of ocean-basin-level populations, we used mean  $F_{ST}$  and  $d_A$  as evidence of population isolation (Taylor et al., 2017; Waples et al., 2018).

For both species, nuclear SNP based  $F_{ST}$  (Cuvier's  $F_{ST}$  = 0.018–0.197, Blainville's  $F_{ST}$  = 0.119) values fall within the range of  $F_{ST}$  values calculated from nuclear SNPs in recognized odontocete subspecies (spinner dolphins (*Stenella longirostris*):  $F_{ST}$  = 0.0045–0.012; pantropical spotted dolphins (*S. attenuata*):  $F_{ST}$  = 0.055; harbour porpoise (*Phocoena phocoena*):  $F_{ST}$  = 0.187 – 0.207; and short-finned pilot whale (*Globicephala macrorhynchus*):  $F_{ST}$  = 0.1 – 0.4; Lah et al., 2016; Leslie and Morin, 2018; Van Cise et al., 2019). The  $F_{ST}$  of ocean-basin level populations using full mitogenomes (Cuvier's  $F_{ST}$  = 0.178–0.623, Blainville's  $F_{ST}$  = 0.711) are much higher than mitogenomic  $F_{ST}$  values calculated in recognized odontocete subspecies (spinner dolphins:  $F_{ST}$  = 0.013, pantropical spotted dolphins:  $F_{ST}$  = 0.013, fin whales (*Balaenoptera physalus*):  $F_{ST}$  = 0.005 – 0.018; Archer et al., 2019; Leslie et al., 2018). The  $F_{ST}$  of the ocean-basin populations calculated using the mtDNA CR (Cuvier's  $F_{ST}$  = 0.241–0.531, Blainville's  $F_{ST}$  = 0.628) is also greater than the range of  $F_{ST}$  values in recognized cetacean subspecies ( $F_{ST}$  = 0.013–0.209; Rosel et al., 2017). In contrast, our estimates of  $d_A$  did not reach the previously described minimum subspecies threshold of 0.004 (Taylor et al., 2017). The exception to this was the Indo-Pacific and Mediterranean Cuvier's comparison (Cuvier's  $d_A$  = 0.0045,  $F_{ST}$  = 0.531). Beaked whales show a contrasting pattern to other cetaceans, where the CR is less diverse compared to other regions of the mitochondrial genome (Dalebout et al., 2004; Morin et al., 2012). It is possible that  $d_A$  measurements using only the CR are not as appropriate for beaked whales as for other cetaceans, and additional evaluation of mitogenomic divergence across known taxonomic groups would be useful to further resolve divergence levels and taxonomy within and among beaked whale species.

The proposed ESUs show different patterns of expansion and contraction and may therefore respond differently to UMEs and other human activities (Taylor et al., 2017). For example, both proposed Mediterranean ESUs have low genetic diversity and historical demography indicative of population contraction, in contrast to Cuvier's in other regions. Furthermore, in both species, individuals from the Southern Hemisphere showed genetic divergence from the Northern Hemisphere and while sample sizes in the former are small, Southern Hemisphere Cuvier's and Blainville's should be managed as distinct ESUs until confirmation of genetic distinctiveness with further sampling.

The designation of DIPs stems from multiple lines of evidence (Martien et al., 2017). Based both on the statistically significant genetic differentiation shown here and the results of long-term studies on resident populations (recently reviewed by Hooker et al., 2019), we suggest the following DIPs for future conservation and management initiatives: Bahamas, Canary Islands and Hawai'i in both Cuvier's and Blainville's, and separate Mediterranean Cuvier's populations in the Ligurian and Ionian seas (Table 2). We acknowledge the limitations of our ability to identify DIPs given the available dataset, as increasing the number and distribution of samples will likely increase the number of identifiable DIPs. However, Martien et al. (2019) advise that for rare or elusive species such as beaked whales, the sample size used to infer management units should not only be assessed with respect to statistical power and representativeness, but the length of time it could take to increase the sample size. Given that the samples in the current study span 140 years, we recommend application of the precautionary principle by incorporating the management units suggested here into conservation and management activities in light of the anthropogenic pressures that these species face (Moore and Barlow, 2013; Parsons, 2016).

## 5. Conclusions

We show that deep-sea predators can have substantial genetic structuring across geographical scales, likely driven by a combination of macroevolutionary (e.g., biogeographical boundaries, body size and thermal preference) and microevolutionary (e.g., philopatry and dispersal) processes. This contributes to the growing body of knowledge of drivers of genetic patterns in deep sea species. The dataset compiled here is the largest for any published analysis of Cuvier's or Blainville's, and is unlikely to be matched

soon due to the inherent difficulties in sampling beaked whales (Baird et al., 2020). Indeed, this study would not have been possible without this global collaboration providing samples from a variety of sources. We hope to encourage future cooperation between researchers, Indigenous groups, conservation organisations, stranding networks, and governments to continue collecting and archiving tissue from as many elusive, deep sea species as possible to facilitate future studies.

### CRediT authorship contribution statement

ABO,NAS,ELC,PAM,MTO,OEG,MR and VM designed the research and sampling design. Laboratory work by ABO,ELC,SSH,SDN, MTO,GG, and VM2, Analysis and writing by ABO,ELC,MLM and MTO, Manuscript editing by: BO,MLM,GG,MMP,LF,AB,AF,AK,CR,RC, ND,RWB,SB,VM,CSB,ER,PAM,ELC,OEGand MTO. Samples contributed by NAS,MTO,MR,MD,ND,RWB,CSB,SB,AB,DB,FC,DC,RC,FD, JD,MD2,JD2,AF,LF,AG,ACK,VM,AAM-G,AM,CO,MMP,CRS,ER,CR,AS,PT,JU and KW.

### Declaration of Competing Interest

The authors declare that they have no known competing financial interests or personal relationships that could have appeared to influence the work reported in this paper.

### Data Availability

- DNA sequences: Newly generated mitogenomes and ddRAD sequence data will be uploaded to NCBI Genbank including sample metadata for each individual and accessible through NCBI Bioproject ID PRJNA889229.

### Acknowledgements

We are grateful for helpful discussion and comments on the manuscript provided by B. Taylor (SWFSC) and J. Onoufriou. We are also grateful for the discussion, comments, edits and samples provided by D. Kerem (IMMRAC). The authors would like to thank K. Andrews for providing the ddRAD protocol. We also thank G. Melo-Santos for the drawings of Cuvier's and Blainville's beaked whales in Figs. 1 and 2. Funding for this research was provided by the Office of Naval Research, Award numbers N000141613017 and N000142112712. ABO was supported by a partial studentship from the University of St Andrews, School of Biology; OEG by the Marine Alliance for Science and Technology for Scotland (Scottish Funding Council grant HR09011); ELC by a Rutherford Discovery Fellowship from the Royal Society of New Zealand Te Aparangi; NAS by a Ramon y Cajal Fellowship from the Spanish Ministry of Innovation; MLM by the European Union's Horizon 2020 Research and Innovation Programme (Marie Skłodowska-Curie grant 801199); CR by the Marine Institute (Cetaceans on the Frontier) and the Irish Research Council; and MTO by the Hartmann Foundation. Advanced whole genome assemblies were provided by J. Johnson of the Broad Institute ([https://data.broadinstitute.org/200m\\_variation/](https://data.broadinstitute.org/200m_variation/)). Many thanks to the New Zealand Cetacean Tissue Archive and Iwi, NMFS-Alaska Region Stranding Programs, NMFS-West Coast Region Stranding Programs, South Africa Museum (IZIKO), National Museum of Scotland, Nova Scotia Museum, SWFSC for allowing access to their Marine Mammal and Sea Turtle Research Collection, Smithsonian Museum of Natural History, and Coordinadora Para o Estudo dos Mamíferos Mariños (CEMMA) for providing samples. National Museums Scotland thanks the Neaunee Foundation for their generous support of a curatorial preparator, and the SeaWorld and Busch Gardens Conservation Fund which supported the collection of beaked whale samples. Thanks also to OceanCare (Switzerland) for their support of the research program led by the Pelagos Cetacean Research Institute and the National Parks and Wildlife Service of the Department of Housing, Local Government and Heritage for part funding the Irish Cetacean Stranding Scheme. The authors thank a long list of sample contributors, field teams and lab personnel for their participation: C. Dunn (BMMRO), J. Calambokidis (Cascadia Research Collective), L. Hickmott (Open Ocean Consulting), the late R. N. P. Goodall (RNP Goodall Foundation), L. Dolar (Silliman University), K. Medlock (Tasmanian Museum and Art Gallery), R. Pitman, the late W. Perrin, and J. Barlow of the Southwest Fisheries Science Center (SWFSC), the late P. Best, M. Ferreira (MATB), D. Veytia, M. Anderson, P. Covelto (CEMMA), P.S. Olsen, T.B. Brand, and L. Vinner (GeoGenetics Sequencing Core), J. Dines, N. Hauser, P. Jepson, J. Mead, Z. Lucas, M. Oremus, C. Potter and J. St. Leger. Special thanks for the University of La Laguna field team supporting this research at El Hierro: C. Yzoard, J. Alcazar, D. Miranda, J. Marrero, P. Arranz, A. Martin, and R. Viñe.

### Appendix A. Supporting information

Supplementary data associated with this article can be found in the online version at [doi:10.1016/j.gecco.2022.e02308](https://doi.org/10.1016/j.gecco.2022.e02308).

### References

- Albertson, G.R., Baird, R.W., Oremus, M., Poole, M.M., Martien, K.K., Baker, C.S., 2017. Staying close to home? Genetic differentiation of rough-toothed dolphins near oceanic islands in the central Pacific Ocean. *Conserv. Genet.* 18 (1), 33–51. <https://doi.org/10.1007/s10592-016-0880-z>.

- Alexander, A., Steel, D.J., Hoekzema, K., Mesnick, S., Engelhaupt, D., Kerr, I., Payne, R., Baker, C.S., 2016. What influences the worldwide genetic structure of sperm whales (*Physeter macrocephalus*)? *Mol. Ecol.* 25, 2754–2772. <https://doi.org/10.1111/mec.13638>.
- Amaral, A.R., Beheregaray, L.B., Bilgmann, K., Boutov, D., Freitas, L., Robertson, K.M., Sequeira, M., Stockin, K.A., Coelho, M.M., Möller, L.M., 2012. Seascape genetics of a globally distributed, highly mobile marine mammal: the Short-beaked common dolphin (Genus *Delphinus*). *PLoS ONE* 7 (2). <https://doi.org/10.1371/journal.pone.0031482>.
- Andrews, S., Lindenbaum, P., Howard, B., Ewels, P. (2010). FastQC High Throughput Sequence QC Report (0.11.7).
- Archer, F.I., Adams, P.E., Schneiders, B.B., 2017. stratag: An R package for manipulating, summarizing and analysing population genetic data. *Mol. Ecol. Resour.* 17 (1), 5–11. <https://doi.org/10.1111/1755-0998.12559>.
- Archer, F.I., Brownell Jr., R.L., Hancock-Hanser, B.L., Morin, P.A., Robertson, K.M., Sherman, K.K., et al., 2019. Revision of fin whale *Balaenoptera physalus* (Linnaeus, 1758) subspecies using genetics. *J. Mammal.* 100, 1653–1670.
- Baird, R.W., 2019. Behavior and ecology of not-so-social odontocetes: Cuvier's and Blainville's beaked whales. In: Würsig, B. (Ed.), *Ethology and Behavioural Ecology of Odontocetes*. Springer Nature, pp. 1–47. [https://doi.org/10.1007/978-3-030-16663-2\\_14](https://doi.org/10.1007/978-3-030-16663-2_14).
- Baird, R.W., Schorr, G.S., Webster, D.L., Mahaffy, S.D., McSweeney, D.J., Hanson, M.B., Andrews, R.D., 2011. Open-ocean movements of a satellite-tagged Blainville's beaked whale (*Mesoplodon densirostris*): Evidence for an offshore population in Hawaii? *Aquat. Mamm.* 37 (4), 506–511. <https://doi.org/10.1578/AM.37.4.2011.506>.
- Baird, R.W., Brownell Jr., R.L., Taylor, B.L., 2020. *Ziphius cavirostris* (Global), Cuvier's Beaked Whale. The IUCN Red List of Threatened Species. e.T23211A5. <https://doi.org/https://dx.doi.org/10.2305/IUCN.UK.2020-3.RLTS.T23211A503791111.en>.
- Barlow, Jay, Ferguson, Megan C., Perrin, William F., Ballance, Lisa, Gerrodette, Tim, Joyce, Gerald, MacLeod, Colin D., Mullin, Keith, Palka, Debra L., Waring, Gordon, 2006. Abundance and densities of beaked and bottlenose whales (family Ziphiidae). *Journal of Cetacean Research and Management* 7 (3), 263–270. <https://doi.org/10.1111/j.1748-7692.1997.tb00656.x>. In press.
- Bernaldo de Quirós, Y., Fernández, A., Baird, R.W., Brownell Jr., R.L., Aguilar de Soto, N., Allen, D., Arbelo, M., Arregui, M., Costidis, A.M., Fahlman, A., Frantzis, A., Gulland, F., Iñiguez, M., Johnson, M.P., Komnenou, A., Koopman, H.N., Pabst, D.A., Roe, W.D., Sierra, E., Schorr, G.S., 2019. Advances in research on the impacts of anti-submarine sonar on beaked whales. *Proc. R. Soc. B Biol. Sci.* 286 (1895), 20182533 <https://doi.org/10.1098/rspb.2018.2533>.
- Bianchi, C.N., Morri, C., 2000. Marine biodiversity of the Mediterranean Sea: Situation, problems and prospects for future research. *Mar. Pollut. Bull.* 40 (5), 367–376. [https://doi.org/10.1016/S0025-326X\(00\)00027-8](https://doi.org/10.1016/S0025-326X(00)00027-8).
- Bouckaert, R., Vaughan, T.G., Barido-Sottani, J., Duchêne, S., Fourment, M., Gavryushkina, A., Heled, J., Jones, G., Kühnert, D., De Maio, N., Matschiner, M., Mendes, F.K., Müller, N.F., Ogilvie, H.A., Du Plessis, L., Popinga, A., Rambaut, A., Rasmussen, D., Siveroni, I., Drummond, A.J., 2019. BEAST 2.5: An advanced software platform for Bayesian evolutionary analysis. *PLoS Comput. Biol.* 15 (4), 1–28. <https://doi.org/10.1371/journal.pcbi.1006650>.
- Broad Institute. (2019). Picard Toolkit.
- Brownlow, A.C., Davison, N.J., Ten Doeschate, M. (2014). Annual Report 2014, 1 January to 31 December 2014, for Marine Scotland, Scottish Government.
- Brownlow, A.C., Davison, N.J., ten Doeschate, M. (2018). Annual Report 2018, 1 January to 31 December 2018, for Marine Scotland, Scottish Government.
- Cammen, K.M., Andrews, K.R., Carroll, E., Foote, A.D., Humble, E., Khudyakov, J.I., Louis, M., McGowen, M.R., Olsen, M.T., Van Cise, A.M., 2016. Genomic methods take the plunge: Recent advances in high-throughput sequencing of marine mammals. *J. Hered.* 107 (6), 481–495. <https://doi.org/10.1093/jhered/esw044>.
- Cañadas, A., Vázquez, J.A., 2014. Conserving Cuvier's beaked whales in the Alborán Sea (SW Mediterranean): Identification of high density areas to be avoided by intense man-made sound. *Biol. Conserv.* 178, 155–162. <https://doi.org/10.1016/j.biocon.2014.07.018>.
- Carøe, C., Gopalakrishnan, S., Vinner, L., Mak, S.S.T., Sinding, M.H.S., Samaniego, J.A., Wales, N., Sicheritz-Pontén, T., Gilbert, M.T.P., 2018. Single-tube library preparation for degraded DNA. *Methods Ecol. Evol.* 9 (2), 410–419. <https://doi.org/10.1111/2041-210X.12871>.
- Carroll, E., Reyes, C., Gaggiotti, O.E., Olsen, M.T., Maaholm, D.J., Rosso, M., Davison, N.J., Martín, V., Schiavi, A., & Aguilar de Soto, N. (2016). Pilot study to assess the utility of ddRAD sequencing in identifying species-specific and shared SNPs among Blainville's (*Mesoplodon densirostris*) and Cuvier's (*Ziphius cavirostris*) beaked whales. *International Whaling Commission*, July. <https://doi.org/10.13140/RG.2.1.2286.5527>.
- Carroll, E., McGowen, M.R., McCarthy, M.L., Marx, F.G., Aguilar, N., Dalebout, M.L., Dreyer, S., Gaggiotti, O.E., Hansen, S.S., Van Helden, A., Onoufriou, A.B., Baird, R.W., Baker, C.S., Berrow, S., Cholewiak, D., Claridge, D., Constantine, R., Davison, N.J., Eira, C., Olsen, M.T., 2021. Speciation in the deep: genomics and morphology reveal a new species of beaked whale *Mesoplodon eueu*. *Proc. R. Soc. B Biol. Sci.* 288 (1961) <https://doi.org/10.1098/rspb.2021.1213>.
- Caye, K., Jay, F., Michel, O., Francois, O., 2018. Fast inference of individual admixture coefficients using geographic data. *Ann. Appl. Stat.* 12 (1), 586–608. <https://doi.org/10.1214/17-AOS1106>.
- Claridge, D.E. (2006). Fine-scale distribution and habitat selection of beaked whales [(M.Sc. Thesis). University of Aberdeen, Scotland]. <https://doi.org/10.1016/j.paed.2015.12.004>.
- Claridge, D.E. (2013). Population ecology of Blainville's beaked whales (*Mesoplodon densirostris*). (PhD thesis). University of St Andrews, Scotland. URI: (<http://hdl.handle.net/10023/3741>).
- Clark, P.U., Archer, D., Pollard, D., Blum, J.D., Rial, J.A., Brovkin, V., Mix, A.C., Pisas, N.G., Roy, M., 2006. The middle Pleistocene transition: characteristics, mechanisms, and implications for long-term changes in atmospheric pCO<sub>2</sub>. *Quat. Sci. Rev.* 25 (23–24), 3150–3184. <https://doi.org/10.1016/j.quascirev.2006.07.008>.
- Clarke, C.R., Karl, S.A., Horn, R.L., Bernard, A.M., Lea, J.S., Hazin, F.H., Prodöhl, P.A., Shivji, M.S., 2015. Global mitochondrial DNA phylogeography and population structure of the silky shark, *Carcharhinus falciformis*. *Mar. Biol.* 162 (5), 945–955. <https://doi.org/10.1007/s00227-015-2636-6>.
- Costello, M.J., Tsai, P., Wong, P.S., Cheung, A.K.L., Basher, Z., Chaudhary, C., 2017. Marine biogeographic realms and species endemicity. *Nat. Commun.* 8 (1), 1–9. <https://doi.org/10.1038/s41467-017-01121-2>.
- Cox, T.M., Ragen, T.J., Read, A.J., Vos, E., Baird, R.W., Balcomb III, K.C., Barlow, J.P., Caldwell, J., Cranford, T.W., Crum, L., D'Amico, A., D'Spain, G.L., Fernández, A., Finneran, J.J., Gentry, R.L., Gerth, W., Gulland, F., Hildebrand, J.A., Houser, D.S., Benner, L., 2006. Understanding the impacts of anthropogenic sound on beaked whales. *J. Cetacea Res. Manag.* 7 (3), 177–187. <https://doi.org/10.1109/LPT.2009.2020494>.
- D'Amico, A., Gisiner, R.C., Ketten, D.R., Hammock, J.A., Johnson, C., Tyack, P.L., Mead, J.G., 2009. Beaked whale strandings and naval exercises. *Aquat. Mamm.* 35 (4), 452–472. <https://doi.org/10.1578/AM.35.4.2009.452>.
- da Silva, D.M.P., Azevedo, A.F., Secchi, E.R., Barbosa, L.A., Flores, P.A.C., Carvalho, R.R., Bisi, T.L., Lailson-Brito, J., Cunha, H.A., 2015. Molecular taxonomy and population structure of the rough-toothed dolphin *Steno bredanensis* (Cetartiodactyla: Delphinidae). *Zool. J. Linn. Soc.* 175 (4), 949–962. <https://doi.org/10.1111/zoj.12301>.
- Dalebout, M.L., Baker, C.S., Mead, J.G., Cockcroft, V.G., Yamada, T.K., 2004. A comprehensive and validated molecular taxonomy of beaked whales, family Ziphiidae. *J. Hered.* 95, 459–473.
- Dalebout, M.L., Ruzzante, D.E., Whitehead, H., Oien, N.I., 2006. Nuclear and mitochondrial markers reveal distinctiveness of a small population of bottlenose whales (*Hyperoodon ampullatus*) in the western North Atlantic. *Mol. Ecol.* 15 (11), 3115–3129. <https://doi.org/10.1111/j.1365-294X.2006.03004.x>.
- Dalebout, Merel L., Hooker, S.K., Christensen, I., 2001. Genetic diversity and population structure among northern bottlenose whales, *Hyperoodon ampullatus*, in the western North Atlantic Ocean. *Can. J. Zool.* 79 (3), 478–484. <https://doi.org/10.1139/cjz-79-3-478>.
- Dalebout, Merel L., Robertson, K.M., Frantzis, A., Engelhaupt, D., Mignucci-Giannoni, A.A., Rosario-Delestre, R.J., Baker, C.S., 2005. Worldwide structure of mtDNA diversity among Cuvier's beaked whales (*Ziphius cavirostris*): Implications for threatened populations. *Mol. Ecol.* 14 (11), 3353–3371. <https://doi.org/10.1111/j.1365-294X.2005.02676.x>.
- Danecek, P., Auton, A., Abecasis, G., Albers, C.A., Banks, E., DePristo, M.A., Handsaker, R.E., Lunter, G., Marth, G.T., Sherry, S.T., McVean, G., Durbin, R., 2011. The variant call format and VCFtools. *Bioinformatics* 27 (15), 2156–2158. <https://doi.org/10.1093/bioinformatics/btr330>.
- Dolman, S.J., Pinn, E., Reid, R.J., Barley, J.P., Deaville, R., Jepson, P.D., O'Connell, M., Berrow, S., Penrose, R.S., Stevick, P.T., Calderan, S., Robinson, K.P., Brownell, R.L., Simmonds, M.P., 2010. A note on the unprecedented strandings of 56 deep-diving whales along the UK and Irish coast. *Mar. Biodivers. Rec.* 3, 1–8. <https://doi.org/10.1017/s175526720999114x>.
- Dray, S., Dufour, A.B., 2007. The ade4 package: Implementing the duality diagram for ecologists. *J. Stat. Softw.* 22 (4), 1–20. <https://doi.org/10.18637/jss.v022.i04>.

- Drummond, A.J., Rambaut, A., 2007. BEAST: Bayesian evolutionary analysis by sampling trees. *BMC Evol. Biol.* 7 (1), 1–8. <https://doi.org/10.1186/1471-2148-7-214>.
- Evanno, G., Regnaut, S., Goudet, J., 2005. Detecting the number of clusters of individuals using the software STRUCTURE: A simulation study. *Mol. Ecol.* 14 (8), 2611–2620. <https://doi.org/10.1111/j.1365-294X.2005.02553.x>.
- Feyrer, L.J., Bentzen, P., Whitehead, H., Paterson, I.G., Einfeldt, A.L., 2019. Evolutionary impacts differ between two exploited populations of northern bottlenose whale (*Hyperoodon ampullatus*). *Ecol. Evol.* 9 (23), 13567–13584. <https://doi.org/10.1002/ece3.5813>.
- Foote, A., Vijay, N., Avila-Arcos, M., Baird, R., Durban, J., Morin, P., Fumagalli, M., Gibbs, R., Hanson, B., Korneliusen, T., Martin, M., Robertson, K., Sousa, V., Vieira, F., Vinar, T., Wade, P., Worley, K., Excoffier, L., Gilbert, T., Wolf, J., 2016. Genome-culture coevolution promotes rapid divergence in the killer whale. *Nat. Commun.* 7, 11693. <https://doi.org/10.1101/040295>.
- Gaither, M.R., Bowen, B.W., Rocha, L.A., Briggs, J.C., 2016. Fishes that rule the world: circumtropical distributions revisited. *Fish Fish.* 17 (3), 664–679. <https://doi.org/10.1111/faf.12136>.
- Gascuel, O., 1997. BIONJ: An improved version of the NJ algorithm based on a simple model of sequence data. *Mol. Biol. Evol.* 14 (7), 685–695. <https://doi.org/10.1093/oxfordjournals.molbev.a025808>.
- Gaspari, S., Airoldi, S., Hoelzel, A.R., 2007. Risso's dolphins (*Grampus griseus*) in UK waters are differentiated from a population in the Mediterranean Sea and genetically less diverse. *Conserv. Genet.* 8, 727–732. <https://doi.org/10.1007/s10592-006-9205-y>.
- Gaspari, S., Marsili, L., Natali, C., Airoldi, S., Lanfredi, C., Deeming, C., Moura, A.E., 2019. Spatio-temporal patterns of genetic diversity in the Mediterranean striped dolphin (*Stenella coeruleoalba*). *J. Zool. Syst. Evol. Res.* 57 (3), 721–734. <https://doi.org/10.1111/jzs.12265>.
- Gkafas, G.A., Exadactylos, A., Rogan, E., Raga, J.A., Reid, R., Hoelzel, A.R., 2017. Biogeography and temporal progression during the evolution of striped dolphin population structure in European waters. *J. Biogeogr.* 44 (12), 2681–2691. <https://doi.org/10.1111/jbi.13079>.
- Gonçalves da Silva, A., Barendse, W., Kijas, J., England, P.R., Hoelzel, A.R., 2020. Genomic data suggest environmental drivers of fish population structure in the deep sea: A case study for the orange roughy (*Hoplostethus atlanticus*). *J. Appl. Ecol.* 57 (2), 296–306. <https://doi.org/10.1111/1365-2664.13534>.
- Goudet, J., 2005. HIERFSTAT, a package for R to compute and test hierarchical F-statistics. *Mol. Ecol. Notes* 5, 184–186. <https://doi.org/10.1111/j.1471-8278.2004.00828.x>.
- Graham, R.M., De Boer, A.M., 2013. The dynamical subtropical front. *J. Geophys. Res. Oceans* 118, 5676–5685. <https://doi.org/10.1002/jgrc.20408>.
- de Greef, E., Einfeldt, A.L., Miller, P.J.O., Ferguson, S.H., Garroway, C.J., Lefort, K.J., Paterson, I.G., Bentzen, P., Feyrer, L.J., 2022. Genomics reveal population structure, evolutionary history, and signatures of selection in the northern bottlenose whale, *Hyperoodon ampullatus*. *Mol. Ecol.* 3. <https://doi.org/10.1111/mec.16643>.
- Gruber, B., Unmack, P.J., Berry, O.F., Georges, A., 2018. dartr: An R package to facilitate analysis of SNP data generated from reduced representation genome sequencing. *Mol. Ecol. Resour.* 18 (3), 691–699. <https://doi.org/10.1111/1755-0998.12745>.
- Hooker, S.K., De Soto, N.A., Baird, R.W., Carroll, E., Claridge, D., Feyrer, L., Miller, P.J.O., Onoufriou, A., Schorr, G., Siegel, E., Whitehead, H., 2019. Future directions in research on beaked whales. *Front. Mar. Sci.* 5 (January) <https://doi.org/10.3389/fmars.2018.00514>.
- COSEWIC. (2011). COSEWIC Assessment and Update Status Report on the Northern Bottlenose Whale (*Hyperoodon ampullatus*) Davis Strait-Baffin Bay-Labrador Sea population, Scotian Shelf population, in Canada. In Committee on the Status of Endangered Wildlife in Canada.
- Jefferson, T.A., 2018. Rough-Toothed Dolphin, *Steno bredanensis*. *Encyclopedia of Marine Mammals*, 3rd Edition. Academic Press, pp. 838–840. <https://doi.org/10.1016/b978-0-12-804327-1.00223-5>.
- Jombart, T., Devillard, S., Balloux, F., 2010. Discriminant analysis of principal components: a new method for the analysis of genetically structured populations. *BMC Genet.* 11 (94), 1–15. <https://doi.org/10.1186/1471-2156-11-94>.
- Kemp, A.E.S., Grigorov, I., Pearce, R.B., Naveira Garabato, A.C., 2010. Migration of the Antarctic Polar Front through the mid-Pleistocene transition: evidence and climatic implications. *Quat. Sci. Rev.* 29 (17–18), 1993–2009. <https://doi.org/10.1016/j.quascirev.2010.04.027>.
- Korneliusen, T.S., Albrechtsen, A., Nielsen, R., 2014. ANGSD: analysis of next generation sequencing data. *BMC Bioinforma.* 15 (1), 1–13. <https://doi.org/10.1186/s12859-014-0356-4>.
- Kraft, S., Pérez-Álvarez, M.J., Olavarría, C., Poulin, E., 2020. Global phylogeography and genetic diversity of the long-finned pilot whale *Globicephala melas*, with new data from the southeastern Pacific. *Sci. Rep.* 10 (1769), 1–13. <https://doi.org/10.1038/s41598-020-58532-3>.
- Lah, L., Trense, D., Benke, H., Berggren, P., Gunnlaugsson, P., Lockyer, C., et al., 2016. Spatially explicit analysis of genome-wide SNPs detects subtle population structure in a mobile marine mammal, the harbor porpoise. *PLoS One* 11, 1–23.
- Lanfear, R., Frandsen, P.B., Wright, A.M., Senfeld, T., Calcott, B., 2017. Partitionfinder 2: New methods for selecting partitioned models of evolution for molecular and morphological phylogenetic analyses. *Mol. Biol. Evol.* 34 (3), 772–773. <https://doi.org/10.1093/molbev/msw260>.
- Leroy, G., Carroll, E.L., Bruford, M.W., Dewoody, J.A., Strand, A., Waits, L., Wang, J., 2017. Next-generation metrics for monitoring genetic erosion within populations of conservation concern. *Evol. Appl.* 1–18. <https://doi.org/10.1111/eva.12564>.
- Leslie, M.S., Morin, P.A., 2018. Structure and phylogeography of two tropical predators, spinner (*Stenella longirostris*) and pantropical spotted (*S. attenuata*) dolphins, from SNP data. *R. Soc. Open Sci.* 5.
- Leslie, M.S., Archer, F.I., Morin, P.A., 2018. Mitogenomic differentiation in spinner (*Stenella longirostris*) and pantropical spotted dolphins (*S. attenuata*) from the eastern tropical Pacific Ocean. *BioRxiv* 00 (00), 1–30. <https://doi.org/10.1101/091215>.
- Li, H. (2013). Aligning sequence reads, clone sequences and assembly contigs with BWA-MEM. 1–3. <https://doi.org/10.1101/091215> [q-bio.GN].
- Li, H., Handsaker, R.E., Wysoker, A., Fennell, T., Ruan, J., Homer, N., Marth, G.T., Abecasis, G., Durbin, R., Subgroup, 1000 Genome Project Data Processing, 2009. The sequence alignment/map format and SAMtools. *Bioinformatics* 25 (16), 2078–2079. <https://doi.org/10.1093/bioinformatics/btp352>.
- MacLeod, C., Perrin, W., Pitman, R., Barlow, J., Ballance, L., D'Amico, A., Gerrodette, T., Joyce, G., Mullin, K., Palka, D., 2005. Known and inferred distributions of beaked whale species (Cetacea: Ziphiidae). *J. Cetacea Res. Manag.* 7 (3), 271.
- MacLeod, C.D., 2005. How big is a beaked whale? A review of body length and sexual size dimorphism in the family Ziphiidae. *J. Cetacea Res. Manag.* 7 (3), 301.
- MacLeod, C.D., D'Amico, A., 2006. A review of beaked whale behaviour and ecology in relation to assessing and mitigating impacts of anthropogenic noise. *J. Cetacea Res. Manag.* 7 (3), 211–221.
- Mangiafico, S. (2020). rcompanion: Functions to Support Extension Education Program Evaluation. R package version 2.3.25.
- Martien, Karen K., Leslie, Matthew S., Taylor, Barbara L., Morin, Phillip A., Archer, Frederick I., Hancock-Hanser, Brittany L., Rosel, Patricia E., Vollmer, Nicole L., Viricel, Amelia, Cipriano, Frank, 2017. Analytical approaches to subspecies delimitation with genetic data. *Marine Mammal Science* 33 (Special Issue), 27–55. <https://doi.org/10.1111/mms.12409>. In press.
- Martien, K.K., Taylor, B.L., Chivers, S.J., Mahaffy, S.D., Gorgone, A.M., Baird, R.W., 2019. Fidelity to natal social groups and mating within and between social groups in an endangered false killer whale population. *Endanger. Species Res.* 40, 219–230. <https://doi.org/10.3354/ESR00995>.
- Martien, K.K., Lang, A.R., Taylor, B.L., Rosel, P.E., Simmons, S.E., Oleson, E.M., Boveng, P.L., Hanson, M.B. (2019). The DIP delineation handbook: A guide to using multiple lines of evidence to delineate demographically independent populations of marine mammals. In U.S. Department of Commerce, NOAA Technical Memorandum NMFS-SWFSC-622.
- McGowen, M.R., Tsagkogeorga, G., Álvarez-Carretero, S., dos Reis, M., Struebig, M., Deaville, R., Jepson, P.D., Jarman, S.N., Polanowski, A.M., Morin, P.A., Rossiter, S.J., 2019. Phylogenomic resolution of the cetacean tree of life using target sequence capture. *O(0)*. *Syst. Biol.* 1–24. <https://doi.org/10.1093/sysbio/syz068>.
- Mejri, R., Lo Brutto, S., Hassine, O.K.B., Arculeo, M., 2009. A study on *Pomatoschistus tortonesei* Miller 1968 (Perciformes, Gobiidae) reveals the Siculo-Tunisian Strait (STS) as a breakpoint to gene flow in the Mediterranean basin. *Mol. Phylogenet. Evol.* 53, 596–601. <https://doi.org/10.1016/j.ympev.2009.04.018>.
- Mignucci-Giannoni, A.A. (1996). Marine mammal strandings in Puerto Rico and the United States and British Virgin Islands. Mayagüez, Puerto Rico: University of Puerto Rico.
- Mignucci-Giannoni, A.A., Rosario-Deleste, R.J., 1998. Mass strandings of goosebeak whales in Puerto Rico. *Whale World Nat. Alert* 1, 2.



- Miller, J.M., Cullingham, C.I., Peery, R.M., 2020. The influence of a priori grouping on inference of genetic clusters: simulation study and literature review of the DAPC method. *Heredity* 125 (5), 269–280. <https://doi.org/10.1038/s41437-020-0348-2>.
- Moore, J.E., Barlow, J.P., 2013. Declining abundance of beaked whales (family Ziphiidae) in the California Current large marine ecosystem. *PLoS ONE* 8 (1), e52770. <https://doi.org/10.1371/journal.pone.0052770>.
- Morin, P.A., Duchène, S., Lee, N., Durban, J.W., & Claridge, D.E. (2012). Preliminary analysis of mitochondrial genome phylogeography of Blainville's, Cuvier's and Gervais' beaked whales. *SC/64/SM14. International Whaling Commission Scientific Meeting* 64, 1–17.
- Morin, P.A., Baker, C.S., Brewer, R.S., Burdin, A.M., Dalebout, M.L., Dines, J.P., Fedutin, I.D., Filatova, O.A., Hoyt, E., Jung, J.L., Lauf, M., Potter, C.W., Richard, G., Ridgway, M., Robertson, K.M., Wade, P.R., 2017. Genetic structure of the beaked whale genus *Berardius* in the North Pacific, with genetic evidence for a new species. *Mar. Mammal. Sci.* 33 (1), 96–111. <https://doi.org/10.1111/mms.12345>.
- Nei, M., 1987. *Molecular Evolutionary Genetics*. Columbia University Press.
- O'Dea, A., Lessios, H.A., Coates, A.G., Eytan, R.I., Restrepo-Moreno, S.A., Cione, A.L., Collins, L.S., de Queiroz, A., Farris, D.W., Norris, R.D., Stallard, R.F., Woodburne, M.O., Aguilera, O., Aubry, M.-P., Berggren, W.A., Budd, A.F., Cozzuol, M.A., Coppard, S.E., Duque-Caro, H., Jackson, J.B.C., 2016. Formation of the Isthmus of Panama. *Sci. Adv.* 2 (8), 1–11. <https://doi.org/10.1126/sciadv.1600883>.
- O'Leary, S.J., Puritz, J.B., Willis, S.C., Hollenbeck, C.M., Portnoy, D.S., 2018. These aren't the loci you'e looking for: principles of effective SNP filtering for molecular ecologists. *Mol. Ecol.* 3193–3206. <https://doi.org/10.1111/mec.14792>.
- OBIS. (2021). Ocean Biodiversity Information System. Intergovernmental Oceanic Commission of UNESCO. [www.obis.org](http://www.obis.org).
- Palsbøll, P.J., Bérubé, M., Allendorf, F.W., 2007. Identification of management units using population genetic data. *Trends Ecol. Evol.* 22 (1), 11–16. <https://doi.org/10.1016/j.tree.2006.09.003>.
- Pante, E., Simon-Bouhet, B., 2013. marmap: a package for importing, plotting and analyzing bathymetric and topographic data in R. *PLoS ONE* 8 (9), 6–9. <https://doi.org/10.1371/journal.pone.0073051>.
- Parsons, E.C.M., 2016. Why IUCN should replace “data deficient” conservation status with a precautionary “assume threatened” status—a cetacean case study. *Front. Mar. Sci.* 3, 2015–2017. <https://doi.org/10.3389/fmars.2016.00193>.
- Patarnello, T., Volckaert, F.A.M.J., Castilho, R., 2007. Pillars of Hercules: the Atlantic-Mediterranean transition a phylogeographical break? *Mol. Ecol.* 16 (21), 4426–4444. <https://doi.org/10.1111/j.1365-294X.2007.03477.x>.
- Peterson, B.K., Weber, J.N., Kay, E.H., Fisher, H.S., Hoekstra, H.E., 2012. Double digest RADseq: An inexpensive method for de novo SNP discovery and genotyping in model and non-model species. *PLoS ONE* 7 (5). <https://doi.org/10.1371/journal.pone.0037135>.
- Podestà, M., D'Amico, A., Pavan, G., Drougas, A., Komnenou, A., Fortunato, N., 2006. A review of Cuvier's beaked whale strandings in the Mediterranean Sea. *J. Cetacea Res. Manag.* 7 (3), 251–261.
- R.L. Pitman, Brownell, Mesoplodon densirostris, Blainville's Beaked Whale. The IUCN Red List of Threatened Species, e.T13244A5 2020. <https://doi.org/https://dx.doi.org/10.2305/IUCN.UK.2020-3.RLTS.T13244A50364253.en>.
- Podestà, M., Azzellino, A., Cañadas, A., Frantzis, A., Moulins, A., Rosso, M., Tepsich, P., Lanfredi, C., 2016. Cuvier's beaked whale, *Ziphius cavirostris*, distribution and occurrence in the Mediterranean Sea: High-use areas and conservation threats. *Adv. Mar. Biol.* 75, 103–140. <https://doi.org/10.1016/bs.amb.2016.07.007>.
- Reyes, C. (2018). Abundance estimate, survival and site fidelity patterns of Blainville's (*Mesoplodon densirostris*) and Cuvier's (*Ziphius cavirostris*) beaked whales off El Hierro (Canary Islands). (MPhil Thesis). University of St Andrews, Scotland.
- Rochette, N.C., Rivera-Colón, A.G., Catchen, J.M., 2019. Stacks 2: Analytical methods for paired-end sequencing improve RADseq-based population genomics. *Mol. Ecol.* 28 (21), 4737–4754. <https://doi.org/10.1111/mec.15253>.
- Rogan, E., Cañadas, A., Macleod, K., Santos, M.B., Mikkelsen, B., Uriarte, A., Van Canneyt, O., Vázquez, J.A., Hammond, P.S., 2017. Distribution, abundance and habitat use of deep diving cetaceans in the North-East Atlantic. *Deep Sea Res. Part II Top. Stud. Oceanogr.* 141, 8–19. <https://doi.org/10.1016/j.dsr2.2017.03.015>.
- Rosel, P.E., Taylor, B.L., Hancock-Hanser, B.L., Morin, P.A., Archer, F.I., Lang, A.R., et al., 2017. A review of molecular genetic markers and analytical approaches that have been used for delimiting marine mammal subspecies and species. *Mar. Mammal. Sci.* 33, 56–75.
- Schipper, J., Chanson, J.S., Chiozza, F., Cox, N.A., Hoffmann, M., Kataria, V., Lamoreux, J., Rodrigues, A.S.L., Stuart, S.N., Temple, H.J., Baillie, J.E.M., Boitani, L., Lacher Jr., T.E., Mittermeier, R.A., Smith, A.T., Absolon, D., Aguiar, J.M., Amori, G., Bakkour, N., Young, B.E., 2008. The status of the world's land and marine mammals: Diversity, threat and knowledge. *Science* 322, 225–230. <https://doi.org/10.1126/science.1165115>.
- Simonis, A.E., Brownell, R.L., Thayer, B.J., Trickey, J.S., Oleson, E.M., Huntington, R., Baumann-Pickering, S., 2020. Co-occurrence of beaked whale strandings and naval sonar in the Mariana Islands, Western Pacific. *Proc. R. Soc. B: Biol. Sci.* 287 (1921) <https://doi.org/10.1098/rspb.2020.0070>.
- Sutton, T.T., & Milligan, R.J. (2019). Aquatic ecology: Deep-sea ecology. In B. D. Fath (Ed.), *Encyclopedia of Ecology*, 2nd Edition (Vol. 1, pp. 35–45). Elsevier B. W. <https://doi.org/10.1016/b978-0-12-409548-9.11010-3>.
- Tajima, F., 1989. Statistical method for testing the neutral mutation hypothesis by DNA polymorphism. *Genetics* 123, 585–595.
- Taylor, Barbara L., Archer, Frederick I., Martien, Karen K., Rosel, Patricia E., Hancock-Hanser, Brittany L., Lang, Aimee R., Leslie, Matthew S., Mesnick, Sarah L., Morin, Phillip A., Pease, Victoria L., Perrin, William F., Robertson, Kelly M., Parsons, Kim M., Viricel, Amelia, Vollmer, Nicole L., Cipriano, Frank, Reeves, Randall R., Krutzen, Michael, Baker, C. Scott, 2017. Guidelines and quantitative standards to improve consistency in cetacean subspecies and species delimitation relying on molecular genetic data. *Marine Mammal Science* 33 (Special Issue), 132–155. <https://doi.org/10.1111/mms.12411>. In press.
- Taylor, B.L., Martien, K.K., Morin, P.A., 2010. Identifying units to conserve using genetic data. *Mar. Mammal. Ecol. Conserv.* 1, 306–324.
- Taylor, B.L., Perrin, W.F., Reeves, R.R., Rosel, P.E., Wang, J.Y., Cipriano, F., Baker, C.S., Brownell Jr., R.L., 2017. Why we should develop guidelines and quantitative standards for using genetic data to delimit subspecies for data-poor organisms like cetaceans. *Mar. Mammal. Sci.* 33 (June), 12–26. <https://doi.org/10.1111/mms.12413>.
- Thompson, K.F., Patel, S., Baker, C.S., Constantine, R., Millar, C.D., 2016. Bucking the trend: Genetic analysis reveals high diversity, large population size and low differentiation in a deep ocean cetacean. *Heredity* 116 (3), 277–285. <https://doi.org/10.1038/hdy.2015.99>.
- Toonen, R.J., Bowen, B.W., Iacchei, M., Briggs, J.C., 2016. Biogeography, Marine. In: Kliman, R.M. (Ed.), *Encyclopedia of Evolutionary Biology*, Volume 1. Academic Press, Oxford, pp. 166–178. <https://doi.org/10.1016/B978-0-12-800049-6.00120-7>.
- Trozas, J., Ferrer-Mata, A., Sanchez-DelBarrio, J.C., Guirao-Rico, S., Librado, P., Ramos-Onsins, S.E., Sanchez-Gracia, A., 2017. DnaSP 6: DNA sequence polymorphism analysis of large data sets. *Mol. Biol. Evol.* 34 (12), 3299–3302. <https://doi.org/10.1093/molbev/msx248>.
- Van Cise, A.M., Martien, K.K., Mahaffy, S.D., Baird, R.W., Webster, D.L., Fowler, J.H., Oleson, E.M., Morin, P.A., 2017. Familial social structure and socially driven genetic differentiation in Hawaiian short-finned pilot whales. *Mol. Ecol.* 26 (23), 6730–6741. <https://doi.org/10.1111/mec.14397>.
- Van Cise, A.M., Baird, R.W., Baker, C.S., Cerchio, S., Claridge, D.E., Fielding, R., Hancock-Hanser, B.L., Marrero, J., Martien, K.K., Mignucci-Giannoni, A.A., Oleson, E. M., Oremus, M., Poole, M.M., Rosel, P.E., Taylor, B.L., & Morin, P.A. (2019). Oceanographic barriers, divergence, and admixture: Phylogeography and taxonomy of two putative subspecies of short-finned pilot whale. *Molecular Ecology*, April, mec.15107. <https://doi.org/10.1111/mec.15107>.
- Waples, R.S. (1995). Evolutionarily significant units and the conservation of biological diversity under the Endangered Species Act. *American Fisheries Society Symposium*, 17(1), 8–27. <https://doi.org/10.1111/j.1523-1739.1998.97524.x>.
- Waples, R.S., Gaggiotti, O.E., 2006. What is a population? An empirical evaluation of some genetic methods for identifying the number of gene pools and their degree of connectivity. *Mol. Ecol.* 15, 1419–1439. <https://doi.org/10.1111/j.1365-294X.2006.02890.x>.
- Waples, R.S., Hoelzel, R., Gaggiotti, O.E., Tiedemann, R., Palsbøll, P.J., Cipriano, F., et al., 2018. Guidelines for genetic data analysis. *J. Cetacea Res Manag* 18, 33–80.
- Weir, B.S., Cockerham, C.C., 1984. Estimating F-statistics for the analysis of population structure. *Evolution* 38 (6), 1358–1370. <https://doi.org/10.2307/2408641>.
- Westbury, M.V., Thompson, K.F., Louis, M., Cabrera, A.A., Skovrind, M., Castruita, J.A.S., Constantine, R., Stevens, J.R., Lorenzen, E.D., 2021. Ocean-wide genomic variation in Gray's beaked whales, *Mesoplodon grayi*. *R. Soc. Open Sci.* 8 (201788), 1–14.

- Winkelman, I., Campos, P.F., Strugnell, J.M., Chere, Y., Smith, P.J., Kubodera, T., Allcock, L., Kampmann, M.-L., Schroeder, H., Guerra, A., Norman, M., Finn, J., Ingraio, D., Clarke, M., Gilbert, M.T.P., 2013. Mitochondrial genome diversity and population structure of the giant squid *Architeuthis*: Genetics sheds new light on one of the most enigmatic marine species. *Proc. R. Soc. B Biol. Sci.* 280 <https://doi.org/10.1098/rspb.2013.0273>.
- Worm, B., Lotze, H.K., Myers, R.A., 2003. Predator diversity hotspots in the blue ocean. *Proc. Natl. Acad. Sci. USA* 100 (17), 9884–9888. <https://doi.org/10.1073/pnas.1333941100>.
- Yamada, T.K., Kitamura, S., Abe, S., Tajima, Y., Matsuda, A., Mead, J.G., Matsuishi, T.F., 2019. Description of a new species of beaked whale (*Berardius*) found in the North Pacific. *Sci. Rep.* 9 (1), 1–14. <https://doi.org/10.1038/s41598-019-46703-w>.